

NICE Guidance on Cancer Services

Improving Outcomes for People with Skin Tumours including Melanoma (update):

The Management of Low-risk Basal Cell
Carcinomas in the Community

May 2010

Developed by the National Collaborating Centre for Cancer

Contents

*Improving Outcomes for
People with Skin Tumours
including Melanoma (update)*

Contents

Foreword	3
1. Methodology	5
Background	5
2. Algorithms	16
3. The management of low-risk basal cell carcinomas in the community	18
The epidemiology of basal cell carcinoma	18
Types of BCC	21
Burden of disease	21
Management options	22
Patient perspective	23
Patient-centred care	24
Training and accreditation	25
Existing guidance	25
Definition of low- and high-risk basal cell carcinoma	27
4. Recommendations	29
Training, education and accreditation	29
Commissioning	29
Superficial BCCs	31
Models of care	31

Quality assurance	38	<i>Improving Outcomes for People with Skin Tumours including Melanoma (update)</i>
Clinical governance	40	
Communication	41	
5. Linking evidence to recommendations	42	<i>Contents</i>
6. Research recommendations	44	
7. Evidence summary	46	
References for evidence summary	48	
Appendices		
Appendix 1: People and organisations involved in production of the guidance		
	50	
Appendix 2: Glossary of terms		
	61	
Appendix 3: Abbreviations		
	65	
Appendix 4: Deleted recommendations from 2006 guidance		
	67	

Foreword

*Improving Outcomes for
People with Skin Tumours
including Melanoma (update)*

Foreword

The importance of basal cell carcinoma (BCC) is underestimated, probably because it is rarely fatal. However, BCC is the commonest type of cancer in England and Wales.

Patients want their low-risk BCCs to be treated effectively the first time, with minimal risk of recurrence and the best cosmetic result possible. Should surgery be required, patients want their healthcare professionals to ensure that the risk of damaging important, proximate anatomical features, such as nerves, is kept to a minimum if possible.

Patients and their carers want their low-risk BCCs to be accurately diagnosed and then to be treated by healthcare professionals who:

- have been adequately trained
- are aware of the full range of treatment options
- have met prescribed standards
- participate in audit
- undertake continuing professional development (CPD) in this clinical area
- keep a 'fail-safe' log of samples sent to the laboratory, reports received and action taken.

Following consideration of the range of clinical presentations of low-risk BCCs, the volume of work they produce and the evidence from clinical audit studies, three models for the management of low-risk BCC in the community have been recommended in this updated guidance. These match the risk of inadequate excision and poor cosmetic results to increasing skill levels of healthcare professionals. Underpinning the clinical governance arrangements is the need for all practitioners to be accredited and to participate in audit and CPD.

It is hoped that implementation of this guidance will lead to improvements in the quality of the management of low-risk BCC in the community.

I would like to thank the members of the Guidance Development Group (GDG) for their wisdom and patient-centred approach to the guidance update and to the staff at the National Collaborating Centre for Cancer (NCC-C) for their hard work and attention to detail during development of this guidance.

*Improving Outcomes for
People with Skin Tumours
including Melanoma (update)*

Foreword

Dr Julia Verne, GDG Chair

Background

1

In February 2006, the National Institute for Health and Clinical Excellence (NICE) published service guidance on skin cancer, 'Improving outcomes for people with skin tumours including melanoma' (NICE guidance on cancer services)¹. Many of the recommendations in this guidance were converted into peer review measures published in the 'Manual for cancer services 2008: skin measures'².

Early in 2009, NICE was made aware of concerns about the implementation of some aspects of its guidance on skin cancer services. These were in relation to the arrangements under which GPs could remove 'low-risk' basal cell carcinomas (BCCs) and how services for skin cancer patients were being commissioned. In April 2009, the National Collaborating Centre for Cancer (NCC-C) was commissioned by NICE to update the 2006 guidance to specifically address the management of low-risk BCCs in the community.

This document updates the recommendations on the management of low-risk BCCs in the community. All recommendations on this topic contained within the original guidance³ have been withdrawn and are superseded by the recommendations presented in this update. However all remaining recommendations in the original guidance are still valid and can be accessed via the NICE website (www.nice.org.uk/CSGSTIM).

It has been agreed that the 2007 Department of Health guidance relating to General Practitioners with a special interest (GPwSIs) in dermatology and skin surgery⁴ will be updated to take account of the

¹ National Institute for Health and Clinical Excellence (2006) Improving outcomes for people with skin tumours including melanoma. Available from www.nice.org.uk/CSGSTIM

² National Cancer Peer Review Programme (2008). Manual for cancer services 2008: skin measures. Available from www.ncpr.nhs.uk/index.php?menu=resources

³ National Institute for Health and Clinical Excellence (2006) Improving outcomes for people with skin tumours including melanoma. Available from www.nice.org.uk/CSGSTIM

⁴ Department of Health (2007) Guidance and competencies for the provision of services using GPs with special interests (GPwSIs): dermatology and skin surgery. Available from www.dh.gov.uk/en/Publicationsandstatistics/Publications/PublicationsPolicyAndGuidance/DH_074665

recommendations presented in this update. This work is scheduled to start in June 2010 and will be funded by the Department of Health.

*Improving Outcomes for
People with Skin Tumours
including Melanoma (update)*

Methodology

What is service guidance?

Service guidance is a series of recommendations for the organisation and delivery of care for individuals in specific clinical conditions or circumstances – from prevention and self-care through to primary and secondary care and onto more specialised services. NICE service guidance is based on the best available evidence of clinical and cost effectiveness, and is produced to help commissioners, healthcare professionals and patients make informed choices about appropriate healthcare. It should be noted that most of the published research on cancer topics focuses on clinical evaluations of treatment; little direct research has been carried out on the organisation and delivery of services.

This service guidance is intended to guide health organisations (for example, primary care trusts, local health boards, cancer networks and trusts), and their managers and healthcare professionals, in improving the effectiveness and efficiency of services for people with low-risk BCC being managed in the community. The information and recommendations in this update are based on reviews of the best available evidence, including service delivery.

Who is the guidance intended for?

This guidance is relevant to all commissioners and healthcare professionals who are responsible for the planning and delivery of the management of low-risk BCC in the community, as well as to the patients themselves and their carers. It is also expected that this guidance will be of significant value to those involved in clinical governance in both primary and secondary care to help ensure that arrangements are in place to deliver appropriate care in these settings.

The remit of the guidance update

The following remit for this guidance update was received from NICE:

- ‘To update the ‘Improving outcomes for people with skin tumours including melanoma⁵’ guidance relating specifically to the management of low-risk basal cell carcinomas in the community’.

⁵ National Institute for Health and Clinical Excellence (2006) Improving outcomes for people with skin tumours including melanoma. Available from www.nice.org.uk/CSGSTIM

The purpose of this remit was to:

- provide an overview of what the update would include (and exclude)
- identify the key aspects of care that must be included
- set the boundaries of the development work and provide a clear framework to enable work to stay within the priorities agreed by NICE and the NCC-C and the remit
- inform the development of the search strategy.

1

The remit was then translated into the following well-defined clinical question by the Guidance Development Group (GDG) Chair and staff at the NCC-C:

- ‘Do outcomes differ when the excisional surgery of a suspicious skin lesion is performed by a general practitioner compared with a specialist in secondary care?’.

Involvement of stakeholders

Details of the guideline development process can be found on the NICE website or in the ‘NICE guidelines manual 2009’⁶. The relevant professional and patient/carer organisations that register as stakeholders are key to the development of all NICE guidance. In brief, their contribution involves submitting relevant evidence and commenting on the draft version of the guidance during the consultation period. A full list of all stakeholder organisations who registered for this update can be found in [Appendix 1.2](#).

The process of guidance development

Overview

Unlike clinical guidelines developed by NICE, there is no expectation to update the set of ‘Improving outcomes guidance’ on cancer services developed by the Department of Health and NICE between 1998 and 2006^{7,8,9,10}. However due to reasons described earlier in this section,

⁶ National Institute for Health and Clinical Excellence. The guidelines manual. London: National Institute for Health and Clinical Excellence; 2009. Available from www.nice.org.uk/GuidelinesManual

⁷ www.dh.gov.uk/en/Publicationsandstatistics/Publications/PublicationsPolicyAndGuidance/DH_4009184

this update represents an ‘exceptional update’ as defined in the ‘NICE guidelines manual 2009’¹¹ and follows the same methodology as that described for a partial guideline update. It should be noted that development of the original guidance¹² was in accordance with the NICE guidelines manual in use at that time¹³.

The GDG (a team of healthcare professionals, lay members and technical experts [see Appendix 1.1]), with support from the NCC-C staff (Appendix 1.3), undertook the development of this update. The basic steps in the process of developing an update are:

- using the remit and defining the clinical question, which sets the parameters of the update
- forming the GDG
- systematically searching for the evidence
- critically appraising the evidence
- incorporating health economic evidence (if appropriate)
- distilling and synthesising the evidence and writing recommendations
- agreeing the recommendations
- structuring and writing the guidance.

1

The Guidance Development Group (GDG)

The GDG for this guidance update was recruited in line with the existing NICE methodology as set out in the ‘NICE guidelines manual 2009’¹⁴. The first step was to appoint a Chair. It was agreed by NICE that the Chair of the original GDG, Dr Julia Verne, should chair the

⁸ www.dh.gov.uk/en/Publicationsandstatistics/Publications/PublicationsPolicyAndGuidance/DH_4005385

⁹ www.dh.gov.uk/en/Publicationsandstatistics/Publications/PublicationsPolicyAndGuidance/DH_4010025

¹⁰ www.nice.org.uk/Guidance/CSG/Published

¹¹ National Institute for Health and Clinical Excellence. The guidelines manual. London: National Institute for Health and Clinical Excellence; 2009. Available from www.nice.org.uk/GuidelinesManual

¹² National Institute for Health and Clinical Excellence (2006) Improving outcomes for people with skin tumours including melanoma. Available from www.nice.org.uk/CSGSTIM

¹³ National Institute for Health and Clinical Excellence. The guidelines manual. London: National Institute for Health and Clinical Excellence; 2005

¹⁴ National Institute for Health and Clinical Excellence. The guidelines manual. London: National Institute for Health and Clinical Excellence; 2009. Available from www.nice.org.uk/GuidelinesManual

new GDG. The NCC-C Director and GDG Chair identified a list of specialties that needed to be represented on the GDG. An open advertisement was placed on the NICE website and requests for applications were also sent to the main stakeholder organisations and patient organisations/charities (see Appendix 1.2) and all cancer networks in England and Wales. Individual GDG members were selected by the NCC-C Director and GDG Chair, based on their application forms.

The guidance development process was supported by staff from the NCC-C, who undertook the literature searches, reviewed and presented the evidence to the GDG, managed the process and contributed to drafting the guidance. At the start of the guidance development process all GDG members' interests were recorded on a standard declaration form that covered consultancies, fee-paid work, share-holdings, fellowships and support from the healthcare industry. At all subsequent GDG meetings, members declared new, arising conflicts of interest, which were always recorded (see Appendix 1.1).

Guidance Development Group meetings

Two GDG meetings were held on 9–10 November 2009 and 21 January 2010. During the first GDG meeting (held over two days) the clinical evidence was reviewed, assessed and recommendations drafted. At the second meeting the GDG reviewed and responded to stakeholder comments and produced the final draft of the guidance.

Patient/carer members

Individuals with direct experience of skin cancer gave an integral user focus to the GDG and the guidance development process. The GDG included two patient/carer members. They contributed as full GDG members to addressing the clinical question, helping to ensure that the evidence addressed their views and preferences, highlighting sensitive issues and terminology relevant to the guidance, and bringing service-user research to the attention of the GDG.

Developing the clinical evidence-based question

Background

The remit for this update was very clear about which patient groups were included and which areas of clinical care should be considered. The clinical question and search strategy that covered this topic within

the original skin cancer guidance were updated and the evidence search re-run from 19 May 2005.

All the evidence used to inform this update is summarised in the accompanying full evidence review 'Improving outcomes for people with skin tumours including melanoma (update): the management of low-risk basal cell carcinomas in the community – evidence review', which includes details of all the studies appraised.

Method

For the clinical question within this update the PICO framework was used. This structured approach divides each question into four components: the patients (the population under study – P), the interventions (what is being done – I), the comparisons (other main treatment options – C) and the outcomes (the measures of how effective the interventions have been – O).

Care pathway

During the development process the GDG prepared a care pathway (or algorithms) in order to explore how patients with low-risk BCC in the community might access treatment and be treated in the NHS (see 'Algorithms' pages 13–14).

Review of clinical literature

At the beginning of the development phase, searches were carried out to identify any relevant guidelines (local, national or international) produced by groups or institutions, since 2006. Additionally, stakeholder organisations and cancer networks across England and Wales were invited to submit evidence for consideration by the GDG, including audits, abstracts and local care pathways. All relevant evidence was appraised and included in the evidence review.

In order to answer the clinical question, the NCC-C information specialist developed an updated search strategy (based on the strategy for the original 2006 guidance) to identify relevant published evidence. Papers that were published or accepted for publication in peer-reviewed journals from 19 May 2005 were considered as evidence. No language restrictions were applied to the search; however, foreign language papers were not requested or reviewed (unless of particular importance to the clinical question).

The following databases were included in the literature search:

- The Cochrane Library
- Medline and Premedline
- Excerpta Medica (Embase)
- Cumulative Index to Nursing and Allied Health Literature (Cinahl)
- Allied & Complementary Medicine (AMED)
- British Nursing Index (BNI)
- Psychinfo
- Web of Science (specifically Science Citation Index Expanded [SCI-EXPANDED] and Social Sciences Citation Index [SSCI])
- System for Information on Grey Literature In Europe (SIGLE)
- Biomed Central
- National Research Register (NRR)
- Current Controlled Trials.

The information specialist sifted and removed any irrelevant material from the literature search results obtained from this list of databases (based on the title or abstract) before passing to the researcher. All the remaining articles were then stored in a Reference Manager electronic library.

Searches were updated and re-run 6 weeks before the stakeholder consultation, thereby ensuring that the latest relevant published evidence was included in the database. Any evidence published after this date was not included. For the purposes of updating this topic, 12 October 2009 should be considered the starting point for searching for new evidence. Further detail of the search strategy is provided in the full evidence review that accompanies this guidance update.

Critical appraisal

Following the literature search, one researcher independently scanned the titles and abstracts of every article and full publications were obtained for any studies considered relevant or where there was insufficient information from the title and abstract to make a decision. The researcher then individually applied the inclusion/exclusion

criteria to determine which studies would be relevant for inclusion and subsequent appraisal. Lists of excluded papers were generated and the rationale for the exclusion was presented to the GDG when required.

The researcher then critically appraised the full papers. Critical appraisal checklists were compiled for each paper and one researcher undertook the critical appraisal and data extraction.

For all the relevant appraised studies, data on the type of population, intervention, comparator and outcomes (PICO) were recorded in evidence tables and an accompanying evidence summary prepared for the GDG (see the full evidence review that accompanies this guidance update). All the evidence was considered carefully by the GDG for accuracy and completeness. All procedures were fully compliant with NICE methodology as detailed in the 'NICE guidelines manual 2009'¹⁵. No formal contact was made with authors.

1

Agreeing the recommendations

For the clinical question, the GDG were presented with a summary of the clinical evidence derived from the studies reviewed and appraised. From this information the GDG were able to derive the guidance recommendations. The link between the evidence and the view of the GDG in making each recommendation is made explicit in the 'Linking evidence to recommendations' section.

Explaining the link between evidence and recommendations

Recommendations were developed using, and linked explicitly to, the evidence that supported them. Because of the way service guidance is currently presented, there is limited scope for expressing how and why a GDG made a particular recommendation from the evidence. The 'Linking evidence to recommendations' section is intended to make this process more transparent to the reader by explaining:

- the strength of evidence about benefits and harms for the intervention being considered
- the degree of consensus within the GDG

¹⁵ National Institute for Health and Clinical Excellence. The guidelines manual. London: National Institute for Health and Clinical Excellence; 2009. Available from www.nice.org.uk/GuidelinesManual

- the costs and cost effectiveness (if formally assessed by the health economics team).

Where evidence was weak or lacking, the GDG agreed the final recommendations through informal consensus and used their collective experience and expertise to identify good practice.

Developing research recommendations

When areas for which good evidence was lacking were identified, the GDG considered making recommendations for future research. Decisions about inclusion were based on factors such as the importance to patients or the population, national priorities and the potential impact on the NHS.

1

Health economics

The original guidance did not contain a *de novo* economic model, therefore this could not be updated and it was not feasible to build a new model to inform this update. An economic model would have proved difficult to construct due to the lack of clear clinical effectiveness evidence, lack of quality of life data and the difficulty in trying to capture differences in costs between surgical procedures carried out by a GP, a GPwSI and a dermatologist, particularly given the wide variation in payment for GPwSIs across the country. A health economist attended all GDG meetings and was able to remind the group of the need to consider both costs and benefits when making their recommendations.

The report assessing the potential economic impact of the original guidance was updated using standard NICE costing methodology, methods for which are explained in the costing statement (available from www.nice.org.uk/CSGSTIM).

Consultation and validation of the guidance

The draft of the guidance was prepared by NCC-C staff in partnership with the GDG Chair and all GDG members. This was then discussed and agreed with the GDG and subsequently forwarded to NICE for consultation with stakeholders.

Registered stakeholders (see [Appendix 1.2](#)) had one opportunity to comment on the draft guidance, which was posted on the NICE website between 23 November and 21 December 2009. The Guideline

Review Panel (GRP) also reviewed the guidance and checked that stakeholder comments had been addressed.

The pre-publication check process

Following stakeholder consultation and subsequent revision, the draft guidance underwent a pre-publication check (for details see the ‘NICE guidelines manual 2009’¹⁶). The pre-publication check provides registered stakeholders with the opportunity to raise any concerns about factual errors and inaccuracies that may exist in the revised guidance after consultation.

1

During the pre-publication check the guidance was posted on the NICE website for 10 working days, together with the consultation table that listed comments received during consultation from stakeholders and responses from the NCC-C and GDG.

All stakeholders were invited to report factual errors using a standard proforma. NICE, the NCC-C and the GDG Chair considered the reported errors and responded only to those related to factual errors. A list of all corrected errors and the revised guidance were submitted to NICE, and the revised guidance was then signed off by the NICE Guidance Executive. The list of reported errors from the pre-publication check and the responses from the NCC-C were subsequently published on the NICE website.

The final document was then submitted to NICE for publication on their website. The other versions of the guidance (see below) were also discussed and approved by the GDG and published at the same time.

Other versions of the guidance

Full guidance

The full version of the original skin cancer guidance (with the recommendations on the management of low-risk BCC in the community withdrawn) and this updated guidance are available to download free of charge from the NICE website (www.nice.org.uk/CSGSTIM) and the NCC-C website (www.wales.nhs.uk/nccc).

¹⁶ National Institute for Health and Clinical Excellence. The guidelines manual. London: National Institute for Health and Clinical Excellence; 2009. Available from www.nice.org.uk/GuidelinesManual

Understanding NICE guidance

A summary of the updated guidance on the management of low-risk BCCs in the community for patients and carers ('Understanding NICE guidance') is available from www.nice.org.uk/CSGSTIM

All the other advice in the 'Understanding NICE guidance' for people with skin tumours and their families or carers that accompanied the 2006 guidance remains the same and is available from www.nice.org.uk/CSGSTIM

1

Implementation

NICE has developed tools to help organisations implement this guidance (see www.nice.org.uk/CSGSTIM).

Funding

The NCC-C was commissioned by NICE to carry out this update. Health economic advice for this guidance was provided by the London School of Hygiene and Tropical Medicine and funded by the NCC-C.

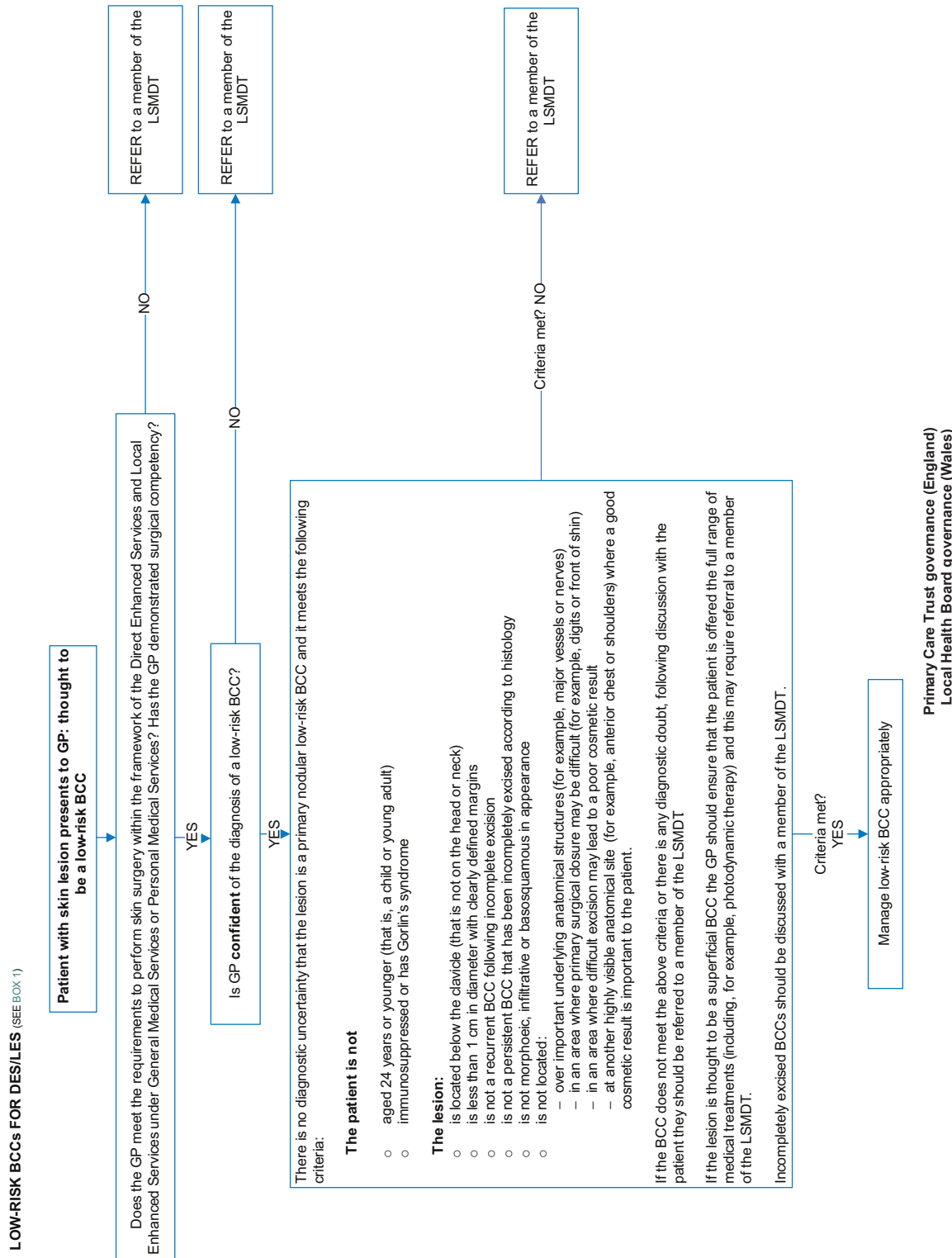
Disclaimer

The NCC-C disclaims any responsibility for damages arising out of the use or non-use of this guidance and the literature used in support of this guidance.

This guidance represents the view of NICE, which was arrived at after careful consideration of the evidence available. Healthcare professionals are expected to take it fully into account when exercising their clinical judgement. However, the guidance does not override the individual responsibility of healthcare professionals to make decisions appropriate to the circumstances of the individual patient, in consultation with the patient and/or guardian or carer, and informed by the summary of product characteristics of any drugs they are considering.

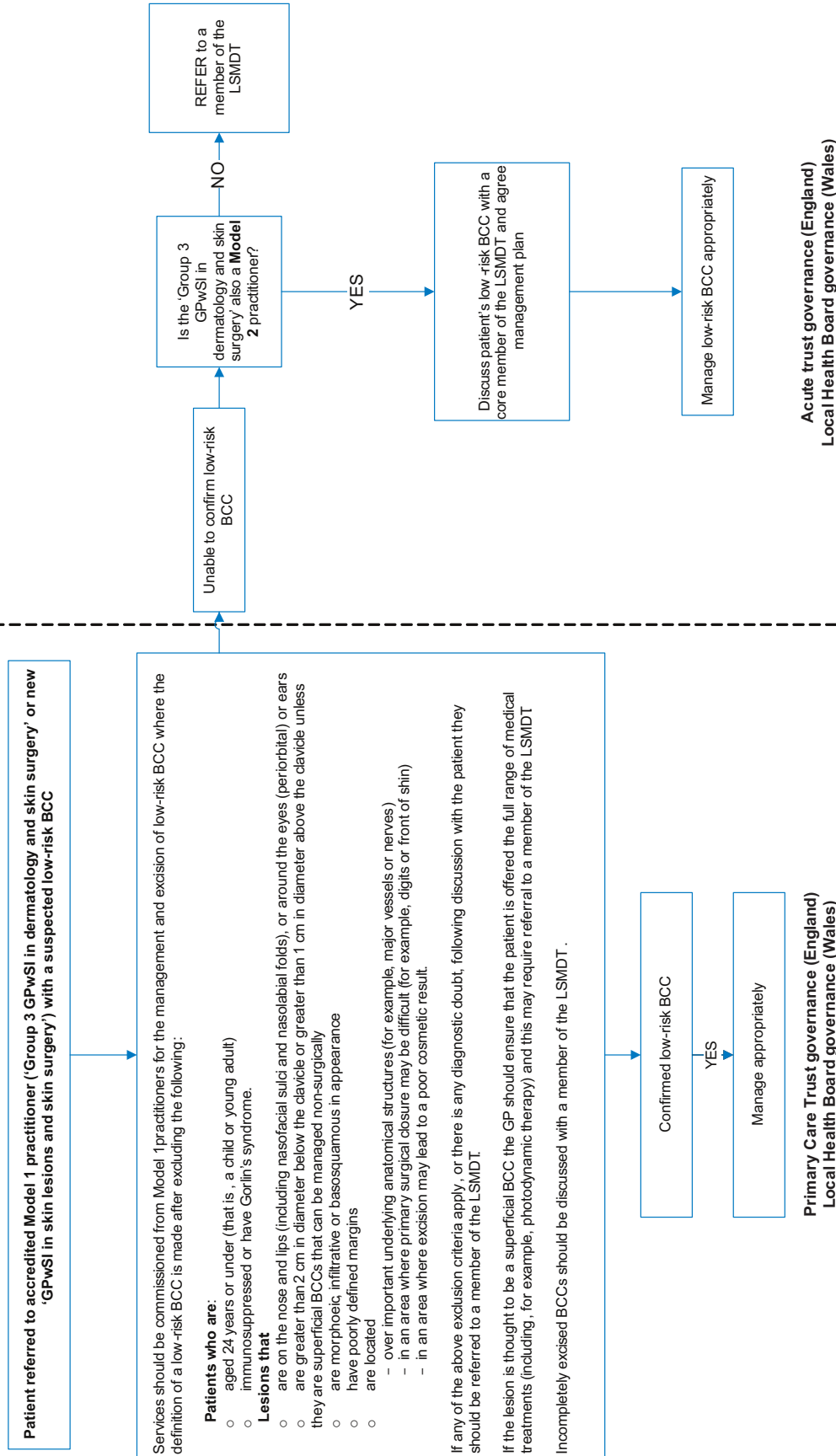
Implementation of this guidance is the responsibility of local commissioners and/or providers. Commissioners and providers are reminded that it is their responsibility to implement the guidance, in their local context, in light of their duties to avoid unlawful discrimination and to have regard to promoting equality of opportunity. Nothing in this guidance should be interpreted in a way that would be inconsistent with compliance with those duties.

Algorithms



MODEL 2 PRACTITIONERS
(SEE BOX 3)

MODEL 1 PRACTITIONERS
(SEE BOX 2)



The management of low-risk basal cell carcinomas in the community

Improving Outcomes for People with Skin Tumours including Melanoma (update)

The management of low-risk basal cell carcinomas in the community

3

The epidemiology of basal cell carcinoma

The importance of BCC is underestimated, probably because it is rarely fatal. However, BCC is the commonest type of cancer in the UK, with an average of 48,000 new cases registered each year in England between 2004 and 2006¹⁷. The incidence of BCC in the South West region is 2.9 times higher than that of lung cancer¹⁸ and places a significant burden on NHS resources¹⁹.

Furthermore, the current number of registered cases is likely to be a significant underestimate of the true incidence of BCC, with modelling estimates indicating that the number of new cases per year is more likely to be between 55,000 and 60,000²⁰. This is partly because the Thames Cancer Registry, which covers all of London and much of the South East region, has until recently not been registering BCCs. Other reasons why the true burden is significantly underestimated include the fact that most cancer registries do not register multiple BCCs in the same individual and that not all BCCs are submitted for histology, which is the major source of registration data.

People diagnosed with one BCC are at increased risk of having further BCCs diagnosed at the same time, or of developing them

¹⁷ South West Public Health Observatory Skin Cancer Hub (www.swpho.nhs.uk/skincancerhub/)

¹⁸ South West Public Health Observatory Skin Cancer Hub (www.swpho.nhs.uk/skincancerhub/)

¹⁹ Morris S, Cox B, Bosanquet N (2009) Cost of skin cancer in England. *The European Journal of Health Economics* 10: 267–73

²⁰ South West Public Health Observatory Skin Cancer Hub (www.swpho.nhs.uk/skincancerhub/)

subsequently. Studies from Scotland suggest that the risk of developing a second BCC within 3 years of the first presentation is approximately 44%²¹. Not all 'low-risk' BCCs are subject to histology before medical treatment. Of greater concern is the failure to submit excised BCCs for histology. One audit submitted under the 2009 skin cancer peer review process in England indicated that up to 50% of GPs removing suspected BCCs do not submit them for histology²². This contravenes the NICE guidance on skin cancer services²³ and the NICE 'Referral guidelines for suspected cancer'²⁴, which made it clear that all excised skin lesions should be sent for histological examination.

The main risk factor for BCC is sun (ultraviolet light) exposure²⁵. This is reflected in the number of tumours that people develop and the predominance of BCCs in sun-exposed areas, for example the head, neck, forearms, hands, lower legs and feet, and trunk. Individuals with fair skin are at more risk of developing BCC.

Regional variation in the UK incidence rates of BCC exists. For example, the registered age-standardised incidence rate of BCC in the South West of England (121.3 per 100,000 population) is much higher than in England as a whole (93.7 per 100,000 population, excluding London and the South East Coast Strategic Health Authorities where registration of BCCs was minimal)²⁶. The incidence rate also varies by age and gender. The incidence rates of BCC increase with age, and over the age of 55 the age-specific incidence rates are higher in males than females. This gap increases with age and is greatest for the 85 and older age group, where the incidence for men is 80% higher than that for women in the South West region²⁷.

BCCs also arise in people with a genetic predisposition, for example Gorlin's syndrome²⁸. These people may have dozens of BCCs, should

²¹ Marciel I, Stern RS (2000) Risk of developing a subsequent nonmelanoma skin cancer in patients with a history of nonmelanoma skin cancer. *Archives of Dermatology* 136: 1524–30

²² National Cancer Peer Review: North Zone Reports 2009 (www.cquins.nhs.uk/?menu=resources)

²³ National Institute for Health and Clinical Excellence (2006) Improving outcomes for people with skin tumours including melanoma. Available from www.nice.org.uk/CSGSTM

²⁴ National Institute for Health and Clinical Excellence (2005) Referral guidelines for suspected cancer. Available from www.nice.org.uk/guidance/CG27

²⁵ Lacour JP (2002) Carcinogenesis of basal cell carcinomas: genetics and molecular mechanisms. *British Journal of Dermatology* 146 (Suppl. 61): S17–19

²⁶ South West Public Health Observatory Skin Cancer Hub (www.swpho.nhs.uk/skincancerhub)

²⁷ South West Public Health Observatory Skin Cancer Hub (www.swpho.nhs.uk/skincancerhub)

²⁸ Lacour JP (2002) Carcinogenesis of basal cell carcinomas: genetics and molecular mechanisms. *British Journal of Dermatology* 146 (Suppl. 61): S17–19

be referred to and managed by the local skin cancer multidisciplinary team (LSMDT) or the specialist skin cancer multidisciplinary team (SSMDT) (as recommended in the NICE guidance on skin cancer services²⁹), and should not have their BCCs treated with radiotherapy.

*Improving Outcomes for
People with Skin Tumours
including Melanoma (update)*

*The management of low-risk
basal cell carcinomas
in the community*

The incidence of BCC is rising, with evidence suggesting an estimated annual percentage increase of 1.4% for males and 1.9% for females between 1992 and 2003³⁰. The largest reported increase in incidence was seen in the 30–39 age group³¹. Unless population attitudes to sun exposure and skin protection change, the numbers of BCCs are likely to rise. The rise in incidence is predicted to be particularly great up to 2030 because of the large increase in the elderly population that will arise as the ‘baby boom’ population ages³². Therefore numbers would rise even if the incidence rates stayed the same.

BCC is rarely fatal, but it can metastasise in a very small number of cases. The majority of BCCs can be treated in an out-patient, day-case setting or community/primary-care setting. However, failure to diagnose early and/or inadequate treatment can result in tumours that destroy important anatomical structures (such as the nose, eye, ear and lip). Such tumours are very challenging to treat, making it difficult to obtain a good cosmetic result or resulting in the tumour becoming inoperable. In England, the number of in-patient bed days devoted to managing BCCs is comparable to those devoted to in-patient management of malignant melanoma³³. A recent study also showed high rates of complex repair operations compared with melanomas³⁴.

Increased public awareness of the risk of excess sun exposure, combined with a change in behaviour towards greater skin protection, could reduce the incidence of BCC. Raising public awareness as advocated in the National Awareness and Early Diagnosis Initiative (NAEDI)³⁵ programme could reduce the proportion of people presenting with advanced disease.

3

²⁹ National Institute for Health and Clinical Excellence (2006) Improving outcomes for people with skin tumours including melanoma. Available from www.nice.org.uk/CSGSTM

³⁰ Brewster DH, Bhatti LA, Inglis JH et al. (2007) Recent trends in incidence of nonmelanoma skin cancers in the East of Scotland, 1992–2003. *British Journal of Dermatology* 156: 1295–1300

³¹ Bath-Hextall F, Leonardi-Bee J, Smith C et al. (2007) Trends in incidence of skin basal cell carcinoma. Additional evidence from a UK primary care database study. *International Journal of Cancer* 121: 2105–8

³² Møller H, Fairley L, Coupland V et al. (2007) The future burden of cancer in England: incidence and numbers of new patients in 2020. *British Journal of Cancer* 96: 1484–8

³³ South West Public Health Observatory Skin Cancer Hub (www.swpho.nhs.uk/skincancerhub)

³⁴ South West Public Health Observatory Skin Cancer Hub (www.swpho.nhs.uk/skincancerhub)

³⁵ The National Awareness and Early Diagnosis Initiative. Available from www.ncin.org.uk/outcomes/naedi.shtml

Types of BCC

*Improving Outcomes for
People with Skin Tumours
including Melanoma (update)*

*The management of low-risk
basal cell carcinomas
in the community*

There are a range of different clinical presentations and histological variants of BCC – a brief summary of these is included in [Table 1](#).

Superficial BCCs are important to distinguish clinically from other types of BCCs because they can frequently be managed medically, avoiding the need for excision.

Table 1. Clinical presentations and histological variants of BCC

Nodular	<ul style="list-style-type: none"> • Commonly on the face • Cystic, pearly, telangiectasia • May be ulcerated • Micronodular and microcystic types may infiltrate deeply
Superficial	<ul style="list-style-type: none"> • Often multiple • Usually on upper trunk and shoulders • Erythematous well-demarcated scaly plaques, often larger than 20 mm at presentation • Slow growth over months or years • May be confused with Bowen's disease or inflammatory dermatoses • Particularly responsive to medical rather than surgical treatment
Morphoeic	<ul style="list-style-type: none"> • Also known as sclerosing or infiltrative BCC • Usually found in mid-facial sites • Skin-coloured, waxy, scar-like • Prone to recurrence after treatment • May infiltrate cutaneous nerves (perineural spread)
Pigmented	<ul style="list-style-type: none"> • Brown, blue or greyish lesion • Nodular or superficial histology • May resemble malignant melanoma
Basosquamous	<ul style="list-style-type: none"> • Mixed basal cell carcinoma (BCC) and squamous cell carcinoma (SCC) • Potentially more aggressive than other forms of BCC

3

Burden of disease

The epidemiology and health services epidemiology of BCC, described above, demonstrates that the number of cases is rising significantly. The management of BCCs imposes a significant workload on both primary- and secondary-care services. The management of high-risk BCCs requires expertise to ensure curative treatment is combined with a good cosmetic result and low risk of complications.

Published data indicate that 24% of primary-care consultations in England and Wales are related to the diagnosis and management of

skin conditions, including skin lesions (1.7%)³⁶. The burden of skin lesion management in dermatology out-patient services is also great, with 35–45% of specialist referrals relating to the diagnosis and management of skin lesions³⁷. This figure is as high as 60% in some areas³⁸. Furthermore, approximately 88% of 2-week wait urgent referrals for suspected skin cancer turn out to be non-malignant³⁹, highlighting a need for better training in primary care on the recognition of skin cancer. The epidemiology of BCC, especially the predictions for the next two decades, means that there will be a requirement for better trained healthcare professionals to diagnose and manage BCCs.

Management options

There are a range of management options for BCC. The choice offered to the patient will depend on the anatomical location, size, clinical appearance, histological diagnosis and ease of access to treatments. The ultimate decision should be taken by the patient having been fully informed about the advantages and disadvantages of management options, including outcomes in terms of likelihood of complete eradication and cosmetic result.

Treatment, provided the diagnosis is confirmed, may include:

- monitoring – observation rather than immediate treatment
- surgical excision
- curettage and cautery/electrodessication
- cryotherapy/cryosurgery
- topical treatment (for example, imiquimod)
- photodynamic therapy (PDT)
- Mohs micrographic surgery
- radiotherapy.

³⁶ Schofield J, Grindlay D, Williams H (2009). Skin conditions in the UK: a health care needs assessment. Centre of Evidence Based Dermatology, University of Nottingham. Available from www.library.nhs.uk/COMMISSIONING/ViewResource.aspx?resID=326029

³⁷ Schofield J, Grindlay D, Williams H (2009). Skin conditions in the UK: a health care needs assessment. Centre of Evidence Based Dermatology, University of Nottingham. Available from www.library.nhs.uk/COMMISSIONING/ViewResource.aspx?resID=326029

³⁸ Joseph T, Jain S, Stephens CJM (2008). Optimizing surgical resources in secondary care: a joint venture with the primary care trust British Journal of Dermatology 159 (Suppl. 1; P-61): 52

³⁹ Cox NH (2004) Evaluation of the UK 2-week referral rule for skin cancer. British Journal of Dermatology 150: 291–8

For treatments where tissue is not obtained for histological confirmation (such as cryotherapy, PDT, imiquimod or radiotherapy) it is expected that the histological diagnosis will have been confirmed before treatment.

Patient perspective

Patients and their families or carers want BCC to be accurately diagnosed and then to be treated by healthcare professionals who:

- have been adequately trained
- are aware of the full range of treatment options
- have met prescribed standards
- participate in audit
- undertake continuous professional development (CPD) in this clinical area
- keep a 'fail-safe' log of samples sent to the laboratory, reports received and action taken.

3

Patients want their BCC(s) to be treated effectively the first time, with minimal risk of recurrence and the best cosmetic result possible. Should surgery be required, patients want their healthcare professionals to ensure that the risk of damaging important, proximate anatomical features, such as nerves, is kept to a minimum where possible.

Before making a decision about the management of their BCC, patients want to be fully informed by a healthcare professional who:

- is up to date with the choice of treatments available and appropriate for the BCC under consideration
- will give them full information on the advantages and disadvantages of management options and the likely outcome of these options both in terms of successful treatment and cosmetic outcome⁴⁰.

Most importantly, patients want to be clearly informed of their diagnosis and involved in the decision on choice of treatment and where this is delivered. A randomised controlled trial found that factors related to a negative cosmetic impact were severity of scar and

⁴⁰ National Institute for Health and Clinical Excellence (2006) Improving outcomes for people with skin tumours including melanoma. Available from www.nice.org.uk/CSGSTM

the extent to which patients were unprepared for the actual size of their scars⁴¹. As with any other area of clinical practice, the healthcare professional's advice and choice of management, including no treatment, should not be influenced by a person's age, gender or disabilities unless these have a direct clinical relationship with the success of certain forms of treatment.

*Improving Outcomes for
People with Skin Tumours
including Melanoma (update)*

*The management of low-risk
basal cell carcinomas
in the community*

While many patients are prepared to travel for specific treatments some prefer to have their care provided close to home. This should not mean a compromise on the quality of care they receive⁴². This emphasis on equity of access to high-quality care is reinforced in the recent Darzi review⁴³.

Patient-centred care

Treatment and care should take into account patients' needs and preferences⁴⁴. Patients with low-risk BCC should have the opportunity to make informed decisions about their care and treatment, in partnership with their healthcare professionals. If patients do not have the capacity to make decisions, healthcare professionals should follow the Department of Health's advice on consent⁴⁵ and the code of practice that accompanies the Mental Capacity Act⁴⁶. In Wales, healthcare professionals should follow advice on consent from the Welsh Assembly Government⁴⁷.

If the patient is under 16, healthcare professionals should follow the guidelines in 'Seeking consent: working with children'⁴⁸.

Good communication between healthcare professionals and patients is essential. It should be supported by evidence-based written information tailored to the patient's needs. Treatment and care, and the information patients are given about it, should be culturally appropriate. It should also be accessible to patients with additional

3

⁴¹ Cassileth BR, Lusk EJ, Matozzo I et al. (1984) The use of photographs of postoperative results before melanoma resection. *Plastic and Reconstructive Surgery* 74: 380–4

⁴² Department of Health (2006) *Our health, our care, our say: a new direction for community services*. Cm 6737. Norwich: The Stationery Office. Available from www.dh.gov.uk/en/Publicationsandstatistics/Publications/PublicationsPolicyAndGuidance/DH_4127453

⁴³ Department of Health (2008) *High quality care for all: NHS next stage review final report*. Cm 7432. Norwich: The Stationery Office. Available from www.dh.gov.uk/en/Publicationsandstatistics/Publications/PublicationsPolicyAndGuidance/DH_085825

⁴⁴ www.gmc-uk.org/guidance/ethical_guidance/consent_guidance_index.asp

⁴⁵ Available from www.dh.gov.uk/consent

⁴⁶ Summary available from www.publicguardian.gov.uk

⁴⁷ Available from www.wales.nhs.uk/consent

⁴⁸ Available from www.dh.gov.uk/consent

needs such as physical, sensory or learning disabilities, and to patients who do not speak or read English.

*Improving Outcomes for
People with Skin Tumours
including Melanoma (update)*

If the patient agrees, families and carers should have the opportunity to be involved in decisions about treatment and care.

*The management of low-risk
basal cell carcinomas
in the community*

Families and carers should also be given the information and support they need.

Training and accreditation

It is recognised that the training of healthcare professionals in dermatology is limited^{49,50}. This includes undergraduate and postgraduate medical, nursing and pharmacy training. In particular, undergraduate medical training may be as little as 2 weeks, with no formal skin surgery training or assessment. No requirement for compulsory dermatology training or assessment of skills in the diagnosis and management of skin diseases is included in the specialist registrar GP training programme. Similarly, there is no formal requirement for training or assessment of newly trained GPs in skin surgery skills⁵¹.

The evidence review carried out for this update found a number of studies/audits that demonstrated higher levels of incomplete excision of BCCs by GPs than hospital specialists. Studies suggest that GPs' skills in the diagnosis of skin lesions could be improved⁵². Further training and assessment in these areas is therefore essential if GPs are to diagnose and manage skin lesions, including low-risk BCCs, appropriately. Furthermore, there is currently no mandatory system of accreditation that includes ongoing continuing professional development (CPD) and participation in audit.

3

Existing guidance

There are three key national documents that guide service development and quality assessment for services for patients with

⁴⁹ All Party Parliamentary Group on Skin (1998) Enquiry into the training of healthcare professionals who come into contact with skin diseases. London

⁵⁰ All Party Parliamentary Group on Skin (2004) Dermatological training for health professionals. London

⁵¹ Schofield J, Grindlay D, Williams H (2009). Skin conditions in the UK: a health care needs assessment. Centre of Evidence Based Dermatology, University of Nottingham. Available from www.library.nhs.uk/COMMISSIONING/ViewResource.aspx?resID=326029

⁵² Pockney P, Primrose J, George S et al. (2009) Recognition of skin malignancy by general practitioners: observational study using data from a population-based randomised controlled trial. *British Journal of Cancer* 100: 24–7

BCC. These are the NICE ‘Improving outcomes for people with skin tumours including melanoma’ guidance⁵³, the Department of Health ‘Guidance and competencies for the provision of services using GPs with a special interest (GPwSIs)’⁵⁴ and the ‘Manual for cancer services: skin measures’⁵⁵. The British Association of Dermatologists has also issued ‘Guidelines for the management of basal cell carcinoma’⁵⁶. Early results from the peer review of skin cancer services in England⁵⁷ show generally poor levels of compliance with the standards, especially with respect to the primary-care component and commissioning, although there are many notable exceptions across the country.

*Improving Outcomes for
People with Skin Tumours
including Melanoma (update)*

*The management of low-risk
basal cell carcinomas
in the community*

Key obstacles identified from the 2009 skin cancer peer review process include:

- weak commissioning
- inadequate clinical governance arrangements across the primary-/secondary-care interface
- issues with finance transfer across the primary-/secondary-care interface
- inadequate understanding of the models under which GPs can manage ‘low-risk’ BCCs
- in some circumstances, poor adherence to the appropriate guidance on ‘high-risk’ BCCs.

This updated guidance will seek to address these areas and provide clarification for patients, commissioners of services and providers of care.

3

⁵³ National Institute for Health and Clinical Excellence (2006) Improving outcomes for people with skin tumours including melanoma. Available from www.nice.org.uk/CSGSTM

⁵⁴ Department of Health (2007) Guidance and competencies for the provision of services using GPs with a Special Interest (GPwSIs): dermatology and skin surgery. Available from www.dh.gov.uk/en/Publicationsandstatistics/Publications/PublicationsPolicyAndGuidance/DH_074665

⁵⁵ National Cancer Peer Review Programme (2008). Manual for cancer services 2008: skin measures. Available from www.ncpr.nhs.uk/index.php?menu=resources

⁵⁶ Telfer NR, Colver GB, Morton CA (2008) Guidelines for the management of basal cell carcinoma. *British Journal of Dermatology* 159: 35–48

⁵⁷ National Cancer Action Team: CQUINS Database Skin Services 2009 (www.cquins.nhs.uk/?menu=resources)

Definition of low- and high-risk basal cell carcinoma

*Improving Outcomes for
People with Skin Tumours
including Melanoma (update)*

*The management of low-risk
basal cell carcinomas
in the community*

The review of the systems for classifying high- and low-risk BCCs (see the full evidence review that accompanies this guidance update) showed that some incorporate histological features that would only be available after biopsy or excision. For the purposes of the clinical recognition of high-risk BCCs, criteria were defined for the 'Manual for cancer services 2008: skin measures'⁵⁸. However there is a need for a clear clinical triage definition for low- and high-risk BCCs to ensure simple and efficient referral to appropriate healthcare professionals for management.

A range of definitions and criteria for defining low- and high-risk BCC were reviewed by the GDG (see the full evidence review that accompanies this guidance update). The GDG concluded that the clinical triage definitions for the face and scalp (head) for GPs without specialist training needed to be simplified because:

- there is a lack of precision about the H-zone (the high-risk zone on the face)
- a 10 mm low-risk BCC resected with margins may make primary closure challenging and lead to a poor cosmetic result
- proximity to facial structures presents a challenge to achieving both a good cosmetic result and adequate resection margins.

These factors are not independent, particularly in lesions on the face and head. Therefore the GDG decided to recommend new clinical criteria for the definition of low- and high-risk BCC presenting in the community that take into account:

- risk of incomplete excision
- the skill and experience required by the healthcare professional to achieve a good cosmetic result
- risk caused by underlying anatomical structures (for example, major blood vessels or nerves)
- other management risks (for example, children and young people, recurrent BCC, Gorlin's syndrome, immunosuppression).

⁵⁸ National Cancer Peer Review Programme (2008) Manual for cancer services 2008: skin measures. Available from www.ncpr.nhs.uk/index.php?menu=resources

In addition, having reviewed the evidence, the GDG considered which groups of healthcare professionals can safely treat which types of BCCs and what the accreditation, CPD and audit requirements should be to provide the best outcomes for patients.

These new clinical criteria and considerations about the groups of healthcare professionals have guided the development of a new framework for the management of high- and low-risk BCCs that will ensure that the most appropriate healthcare professional treats each BCC, according to the level of risk and the skills and training of the healthcare professional.

The size and clinical type of the low-risk BCC will influence the choice of healthcare professional, with some services providing a fuller range of services (such as Group 3 community cancer GPwSIs, Model 2 and specialist outreach services) than others (GPs working according to the Directed Enhanced Services [DES] framework or Local Enhanced Services [LES] under General Medical Services or Personal Medical Services). This guidance makes specific recommendations in relation to the different groups of healthcare professionals, and the types of lesions they treat.

*Improving Outcomes for
People with Skin Tumours
including Melanoma (update)*

*The management of low-risk
basal cell carcinomas
in the community*

Recommendations

*Improving Outcomes for
People with Skin Tumours
including Melanoma (update)*

Recommendations

Training, education and accreditation

All healthcare professionals managing skin lesions in the community should have specialist training in the diagnosis and management of skin lesions appropriate to their role.

Primary Care Trusts (PCTs) or Local Health Boards (LHBs) should ensure that all GPs and GPwSIs who diagnose, manage and excise low-risk BCCs in the community are fully accredited to do so and undergo continuous professional development in the diagnosis and management of skin lesions to maintain their accreditation. For both groups (GPs and GPwSIs) this accreditation should be performed locally by PCTs or LHBs. The standards and tools to support this process are contained within national guidance documents⁵⁹ and the recommendations within this document. The process will differ for GPs and GPwSIs and boxes 1–3 below provide more detail about this.

4

Commissioning

Commissioners should use the commissioning cycle⁶⁰ and follow the process outlined in the NHS primary care contracting guidance⁶¹ when commissioning services for BCC.

⁵⁹ Department of Health (2007) Guidance and competencies for the provision of services using GPs with special interests (GPwSIs): dermatology and skin surgery. Available from www.dh.gov.uk/en/Publicationsandstatistics/Publications/PublicationsPolicyAndGuidance/DH_074665

⁶⁰ Department of Health (2007) World class commissioning: vision. London: Department of Health. Available from www.dh.gov.uk/en/Publicationsandstatistics/Publications/PublicationsPolicyAndGuidance/DH_080956

⁶¹ NHS Primary Care Contracting (2008) Providing care for patients with skin conditions: guidance and resources for commissioners. Leeds: NHS Primary Care Contracting. Available from www.pcc.nhs.uk/uploads/dermatologyguidance.pdf

Commissioners should undertake a full needs assessment of low-risk BCC for their specific population and this should:

- include projections of the likely increase in the number of cases over the next two decades
- consider local issues such as population demographics, access to services and patient preferences.

Recommendations

Commissioners should:

- ensure that the management of low-risk BCCs by GPs in the community is subject to the quality standards and requirements outlined in this guidance
- consider quality of care and value for money in commissioning services for the management of low-risk BCCs
- consider innovative approaches to the diagnosis of low-risk BCCs so that patients are not inconvenienced with unnecessary travel/access arrangements.

4

Provided quality standards are ensured, commissioners should commission services from the range of healthcare professionals described in this guidance.

PCTs or LHBs should ensure that services procured/commissioned (by practice-based commissioning) for low-risk BCCs for their population adhere to national cancer peer review measures⁶².

All children and young people (aged 24 or below)⁶³ with a suspected skin cancer, including BCC, should be referred to a member of the skin cancer multidisciplinary team (MDT) regardless of suspected lesion diagnosis, size or anatomical location.

BCC patients who are immunosuppressed or have Gorlin's syndrome should be referred to a member of the LSMDT or SSMDT.

⁶² National Cancer Peer Review Programme (2008) Manual for cancer services 2008: skin measures. Available from www.ncpr.nhs.uk/index.php?menu=resources

⁶³ National Institute for Health and Clinical Excellence (2005) Improving outcomes in children and young people with cancer. Available from www.nice.org.uk/CSGCYP

Superficial BCCs

Patients with superficial BCCs (not usually classified as high risk) should be referred to doctors with experience of the full range of medical treatments, including photodynamic therapy (see the definition of superficial BCCs in Table 1).

Doctors managing superficial BCC in the community should have experience and knowledge of this condition.

Models of care

The recommendations below specify the new clinical criteria for triage that should be used to identify those BCCs that should be managed by one of three different groups of healthcare professionals in primary care:

- **Low-risk BCCs for DES/LES** GPs performing skin surgery within the framework of the Directed Enhanced Services and Local Enhanced Services under General Medical Services or Personal Medical Services^{64,65} (**see Box 1**).
- **Model 1 practitioners** – as defined in the ‘Manual for cancer services 2008: skin measures’⁶⁶. These practitioners are ‘Group 3 GPwSI in dermatology and skin surgery’ as defined by the Department of Health guidance^{67,68}, and include a new ‘GPwSI in skin lesions and skin surgery’ (**see Box 2**).
- **Model 2 practitioners** – as defined in the ‘Manual for cancer services 2008: skin measures’⁶⁹. These are outreach community skin cancer services provided by acute trusts or LHBs linked to the LSMDT (**see Box 3**).

4

⁶⁴ Available from www.dh.gov.uk/prod_consum_dh/groups/dh_digitalassets/@dh/@en/documents/digitalasset/dh_4136870.pdf

⁶⁵ Available from www.wales.nhs.uk/sites3/page.cfm?orgid=480&pid=6064

⁶⁶ National Cancer Peer Review Programme (2008) Manual for cancer services 2008: skin measures. Available from www.ncpr.nhs.uk/index.php?menu=resources

⁶⁷ Department of Health (2007) Guidance and competencies for the provision of services using GPs with special interests (GPwSIs): dermatology and skin surgery. Available from www.dh.gov.uk/en/Publicationsandstatistics/Publications/PublicationsPolicyAndGuidance/DH_074665

⁶⁸ Department of Health (2007) Implementing care closer to home: convenient quality care for patients. Part 3: the accreditation of GPs and pharmacists with special interests. London: Department of Health. Available from www.dh.gov.uk/en/Publicationsandstatistics/Publications/PublicationsPolicyAndGuidance/DH_074430

⁶⁹ National Cancer Peer Review Programme (2008) Manual for cancer services 2008: skin measures. Available from www.ncpr.nhs.uk/index.php?menu=resources

Low-risk BCCs for DES/LES

GPs performing skin surgery within the framework of the DES and LES under General or Personal Medical Services^{70, 71}

Only those low-risk BCCs in anatomical sites where excision is easy and in patients who do not have other associated risk factors should be managed by GPs with no special interest or training in skin cancer. The types of low-risk BCC that these GPs can excise and the requirements for their accreditation by the PCT or LHB are outlined in [Box 1](#).

Box 1. Low-risk BCCs for DES/LES

Services for the removal of low-risk nodular BCCs that can be commissioned from GPs within the framework of the DES and LES under General or Personal Medical Services

Services should be commissioned from these GPs where there is no diagnostic uncertainty that the lesion is a primary nodular low-risk BCC and it meets the following criteria.

The patient is not:

- aged 24 years or younger (that is, a child or young adult)
- immunosuppressed or has Gorlin's syndrome.

The lesion:

- is located below the clavicle (that is, not on the head or neck)
- is less than 1 cm in diameter with clearly defined margins
- is not a recurrent BCC following incomplete excision
- is not a persistent BCC that has been incompletely excised according to histology
- is not morphoeic, infiltrative or basosquamous in appearance
- is not located:
 - over important underlying anatomical structures (for example, major vessels or nerves)
 - in an area where primary surgical closure may be difficult (for example, digits or front of shin)
 - in an area where difficult excision may lead to a poor cosmetic result
 - at another highly visible anatomical site (for example, anterior chest or shoulders) where a good cosmetic result is important to the patient.

If the BCC does not meet the above criteria, or there is any diagnostic doubt, following discussion with the patient they should be referred to a member of the LSMDT.

If the lesion is thought to be a superficial BCC the GP should ensure that the patient is offered the full range of medical treatments (including, for example, photodynamic therapy) and this may require referral to a member of the LSMDT.

Incompletely excised BCCs should be discussed with a member of the LSMDT.

⁷⁰ Available from www.dh.gov.uk/prod_consum_dh/groups/dh_digitalassets/@dh/@en/documents/digitalasset/dh_4136870.pdf

⁷¹ Available from www.wales.nhs.uk/sites3/page.cfm?orgid=480&pid=6064

Criteria for accreditation of GPs within the framework of the DES and LES under General or Personal Medical Services

GPs performing skin surgery on low-risk BCCs within the framework of the DES and LES under General or Personal Medical Services should:

- demonstrate competency in performing local anaesthesia, punch biopsy, shave excision, curettage and elliptical excision using the direct observation of procedural skills (DOPS) assessment tool in the Department Health Guidance for GPwSIs in dermatology and skin surgery⁷² and then follow a program of revalidation
- have specialist training in the recognition and diagnosis of skin lesions appropriate to their role.
- send all skin specimens removed to histology for analysis
- provide information about the site of excision and provisional diagnosis on the histology request form
- maintain a 'fail-safe' log of all their procedures with histological outcome to ensure that patients are informed of the final diagnosis, and whether any further treatment or follow-up is required
- provide quarterly feedback to their PCT or LHB on the histology reported as required by the national skin cancer minimum dataset⁷³, including details of all proven BCCs
- provide details to their PCT or LHB of all types of skin cancer removed in their practice as described in the 2006 NICE guidance on skin cancer services⁷⁴ and should not knowingly remove skin cancers other than low-risk BCCs
- provide evidence of an annual review of clinical compared with histological accuracy in diagnosis for the low-risk BCCs they have managed
- attend, at least annually, an educational meeting (organised by the Skin Cancer Network Site Specific Group), which should:
 - present the 6-monthly BCC network audit results, including a breakdown of individual practitioner performance
 - include one CPD session (a total of 4 hours) on skin lesion recognition and the diagnosis and management of low-risk BCCs
 - be run at least twice a year.

⁷² Department of Health (2007) Guidance and competencies for the provision of services using GPs with special interests (GPwSIs): dermatology and skin surgery. Available from www.dh.gov.uk/en/Publicationsandstatistics/Publications/PublicationsPolicyAndGuidance/DH_074665

⁷³ Available from the National Cancer Intelligence Network (NCIN): www.ncin.org.uk/index.shtml

⁷⁴ National Institute for Health and Clinical Excellence (2006) Improving outcomes for people with skin tumours including melanoma. Available from www.nice.org.uk/CSGSTIM

Model 1 practitioners

*‘Group 3 GPwSIs in dermatology and skin surgery’^{75,76} and a new ‘GPwSI in skin lesions and skin surgery’**

The current GPwSI in dermatology and skin surgery guidance requires that Group 3 GPwSIs are trained in the management of the full range of skin diseases, including both inflammatory dermatoses and skin lesion diagnosis and management. To increase the number of healthcare professionals in primary care able to manage suspected skin cancer, a new ‘GPwSI in skin lesions and skin surgery’* is proposed with less onerous training and accreditation requirements than ‘Group 3 GPwSI in dermatology and skin surgery’.

Model 1 practitioners should be trained and accredited in the management and excision of low-risk BCCs in the community. They should manage an expanded range of low-risk BCCs, including some on the head and neck, as outlined in [Box 2](#).

Box 2. Model 1 practitioners

Low-risk BCCs that can be operated on by Model 1 practitioners in the community (existing ‘Group 3 GPwSI in dermatology and skin surgery’ and new ‘GPwSI in skin lesions and skin surgery’*)

Services should be commissioned from Model 1 practitioners for the management and excision of low-risk BCC where the definition of a low-risk BCC is made after excluding the following.

Patients who are:

- aged 24 years or younger (that is, a child or young adult)
- immunosuppressed or have Gorlin’s syndrome

Lesions that:

- are on the nose and lips (including nasofacial sulci and nasolabial folds), or around the eyes (periorbital) or ears
- are greater than 2 cm in diameter below the clavicle or greater than 1 cm in diameter above the clavicle unless they are superficial BCCs that can be managed non-surgically
- are morpheaic, infiltrative or basosquamous in appearance

⁷⁵ Department of Health (2007) Guidance and competencies for the provision of services using GPs with special interests (GPwSIs): dermatology and skin surgery. Available from www.dh.gov.uk/en/Publicationsandstatistics/Publications/PublicationsPolicyAndGuidance/DH_074665

⁷⁶ Department of Health (2007) Implementing care closer to home: convenient quality care for patients. Part 3: the accreditation of GPs and pharmacists with special interests. London: Department of Health. Available from www.dh.gov.uk/en/Publicationsandstatistics/Publications/PublicationsPolicyAndGuidance/DH_074430

* The 2007 Department of Health guidance relating to ‘GPwSIs in dermatology and skin surgery’ will be reviewed and updated following publication of this updated NICE guidance and will take account of this new ‘GPwSI in skin lesions and skin surgery’. Commissioners and practitioners should be fully conversant with this document and take into account the future changes.

- have poorly defined margins
- are located:
 - over important underlying anatomical structures (for example, major vessels or nerves)
 - in an area where primary surgical closure may be difficult (for example, digits or front of shin)
 - in an area where excision may lead to a poor cosmetic result.

If any of the above exclusion criteria apply, or there is any diagnostic doubt, following discussion with the patient they should be referred to a member of the LSMDT.

If the lesion is thought to be a superficial BCC the GP should ensure that the patient is offered the full range of medical treatments (including, for example, photodynamic therapy) and this may require referral to a member of the LSMDT.

Incompletely excised BCCs should be discussed with a member of the LSMDT.

Criteria for accreditation of Model 1 practitioners by PCTs or LHBs

GPwSIs performing skin surgery as 'Group 3 GPwSI in dermatology and skin surgery' should follow the framework* for the training and accreditation of Model 1 practitioners, which is defined by the Department of Health as follows:

- they are accredited by PCTs or LHBs according to national guidance appropriate to their role as GPwSIs^{77,78}
- the GPwSI is linked to a named skin cancer LSMDT and attends four LSMDT meetings per year, skin cancer clinical practice is audited annually as defined in the dermatology and skin surgery GPwSI guidance⁷⁹
- clinical governance arrangements are with the PCT or LHB and the GPwSI meets the continuing professional development requirements for community skin cancer clinicians specified in the dermatology and skin surgery GPwSI guidance⁸⁰

In addition they should:

- provide evidence of an annual review of clinical compared with histological accuracy in diagnosis of the low-risk BCCs they have managed
- attend, at least annually, an educational meeting (organised by the Skin Cancer Network Site Specific Group), which should:
 - present the 6-monthly BCC network audit results, including a breakdown of individual practitioner performance
 - include one CPD session (a total of 4 hours) on skin lesion recognition and the diagnosis and management of low-risk BCCs
 - be run at least twice a year.

⁷⁷ Department of Health (2007) Guidance and competencies for the provision of services using GPs with special interests (GPwSIs): dermatology and skin surgery. Available from www.dh.gov.uk/en/Publicationsandstatistics/Publications/PublicationsPolicyAndGuidance/DH_074665

⁷⁸ Department of Health (2007) Implementing care closer to home: convenient quality care for patients. Part 3: the accreditation of GPs and pharmacists with special interests. London: Department of Health. Available from www.dh.gov.uk/en/Publicationsandstatistics/Publications/PublicationsPolicyAndGuidance/DH_074430

⁷⁹ Department of Health (2007) Guidance and competencies for the provision of services using GPs with special interests (GPwSIs): dermatology and skin surgery. Available from www.dh.gov.uk/en/Publicationsandstatistics/Publications/PublicationsPolicyAndGuidance/DH_074665

⁸⁰ Department of Health (2007) Guidance and competencies for the provision of services using GPs with special interests (GPwSIs): dermatology and skin surgery. Available from www.dh.gov.uk/en/Publicationsandstatistics/Publications/PublicationsPolicyAndGuidance/DH_074665

A new 'GPwSI in skin lesions and skin surgery'* should be developed whose role is as follows:

- training and accreditation to the same standard as the 'Group 3 GPwSI in dermatology and skin surgery' but for skin lesions only (excluding the inflammatory skin disorders)
- all other criteria, including referral pathways, link to the LSMDT, clinical governance arrangements and CPD requirements, to match the 'Group 3 GPwSI in dermatology and skin surgery'
- managing low-risk BCCs only within the framework described above for the 'Group 3 GPwSI in dermatology and skin surgery'.

*[*The 2007 Department of Health guidance relating to 'GPwSIs in dermatology and skin surgery'⁸¹ will be reviewed and updated following publication of this updated NICE guidance and will take account of this new 'GPwSI in skin lesions and skin surgery'. Commissioners and practitioners should be fully conversant with this document and take into account the future changes.]*

Model 2 practitioners

Outreach community skin cancer services under acute trust or LHB governance linked to the LSMDT

A Model 2 practitioner should be one of the following:

- a medical practitioner performing skin surgery in a community setting
- a suitably trained specialist nurse.

The 'Manual for cancer services 2008: skin measures'⁸² identifies Model 2 practitioners (doctors or nurses) who can perform surgery on **pre-diagnosed** lesions (see Box 3). These Model 2 practitioners can undertake surgery on both low- and high-risk BCCs as well as other types of skin cancer provided that:

- they have demonstrated surgical competence
- surgery is performed after the lesions have been diagnosed by a member of the LSMDT and a management plan identified.

Model 2 services sit within acute trust or LHB clinical governance frameworks.

⁸¹ Department of Health (2007) Guidance and competencies for the provision of services using GPs with special interests (GPwSIs): dermatology and skin surgery. Available from www.dh.gov.uk/en/Publicationsandstatistics/Publications/PublicationsPolicyAndGuidance/DH_074665

⁸² National Cancer Peer Review Programme (2008) Manual for cancer services 2008: skin measures. Available from www.ncpr.nhs.uk/index.php?menu=resources

Overlap between Model 1 ('Group 3 GPwSI in dermatology and skin surgery') and Model 2 practitioners

*Improving Outcomes for
People with Skin Tumours
including Melanoma (update)*

Recommendations

As a requirement of the GPwSI guidance⁸³, 'Group 3 GPwSI in dermatology and skin surgery' have a mentoring session (as a minimum, monthly) with a local dermatology specialist team linked to an MDT. Most 'Group 3 GPwSI in dermatology and skin surgery' will, in addition to their PCT or LHB governance arrangements, have a documented link with an acute trust/hospital clinical governance framework. Provided this is the case, then the healthcare professional can work as both a Model 1 'Group 3 GPwSI in dermatology and skin surgery' and a Model 2 practitioner excising the full range of skin cancers, provided the patient's low-risk BCC has been discussed and a management plan agreed with a core member of the LSMDT.

Box 3. Model 2 practitioners

Criteria for accreditation of Model 2 practitioners

Model 2 practitioners should sit within acute trust or LHB clinical governance frameworks and should:

- be trained in and have demonstrated competency in skin surgery techniques (as per SS1 and SS2 frameworks in the GPwSI guidance⁸⁴)
- be associated with a named LSMDT
- perform surgery on pre-diagnosed skin cancers, receiving referrals from a member of the LSMDT with an agreed treatment plan.

If they are 'Group 3 GPwSI in dermatology and skin surgery' then they should provide evidence of an annual review of clinical compared with histological accuracy in diagnosis of the low-risk BCCs they have managed.

GPs should attend, at least annually, an educational meeting (organised by the Skin Cancer Network Site Specific Group), which should:

- present 6-monthly BCC network audit results, including a breakdown of individual practitioner performance
- include one CPD session (a total of 4 hours) on skin lesion recognition and the diagnosis and management of low-risk BCCs
- be run at least twice a year.

4

⁸³ Department of Health (2007) Guidance and competencies for the provision of services using GPs with special interests (GPwSIs): dermatology and skin surgery. Available from www.dh.gov.uk/en/Publicationsandstatistics/Publications/PublicationsPolicyAndGuidance/DH_074665

⁸⁴ Department of Health (2007) Guidance and competencies for the provision of services using GPs with special interests (GPwSIs): dermatology and skin surgery. Available from www.dh.gov.uk/en/Publicationsandstatistics/Publications/PublicationsPolicyAndGuidance/DH_074665

Hospital specialists working in the community

*Improving Outcomes for
People with Skin Tumours
including Melanoma (update)*

Recommendations

Consultants and speciality and associate specialist [SAS] doctors working in the community should provide the full range of skin cancer services, including the management of low-risk BCCs.

Quality assurance

Histopathology

All skin lesion samples (excision, incision, punch biopsy and curettage) should be sent for histological examination as recommended in the NICE 'Referral guidelines for suspected cancer'⁸⁵. If a person has more than one lesion, samples should be sent in separate specimen pots with referral forms.

Histology request and reporting forms, and the electronic recording of these data items, should be improved to capture the national skin cancer minimum dataset requirements (National Cancer Intelligence Network dataset project [in development]⁸⁶ and the Royal College of Pathology dataset⁸⁷).

All healthcare professionals should have a 'fail-safe' mechanism in place to ensure that they receive results for the skin lesion samples they send for histological assessment and act upon the results. This means that:

- all samples sent to the laboratory should be accompanied with a numerical checklist
- any sample not received by the laboratory should be immediately notified to the operating GP
- all results should be cross checked to ensure they have been seen and actioned.

Healthcare professionals should take appropriate action if the histology result reclassifies the lesion as a high-risk BCC or a SCC, malignant melanoma or other rare skin tumour and refer to approved specialists as recommended in 'Improving outcomes for people with

⁸⁵ National Institute for Health and Clinical Excellence (2005) Referral guidelines for suspected cancer. Available from www.nice.org.uk/guidance/CG27

⁸⁶ Available from the National Cancer Intelligence Network (NCIN): www.ncin.org.uk/index.shtml

⁸⁷ Available from the Royal College of Pathologists: www.rcpath.org/index.asp?PageID=154

skin tumours including melanoma' (NICE guidance on cancer services)⁸⁸. The following histological criteria denote high-risk BCC:

- incomplete excision margins
- morphoeic, infiltrative, micronodular or basosquamous
- perineural invasion below the dermis.

Recommendations

Each PCT or LHB should commission histopathology skin cancer services that clearly identify each individual healthcare professional. Audit data should be presented in an anonymised fashion using individual identifier numbers, but individual healthcare professionals and PCTs or LHBs should be given data that is identifiable.

GPs operating under DES/LES should send their low-risk BCC samples to the main histopathology laboratory(ies) that are linked to their LSMDT.

4

Data collection and audit

Healthcare professionals managing low-risk BCCs in the community should maintain a written or electronic record of the suspected and actual skin cancers they have managed in their individual caseload.

As required by the 'Manual for cancer services 2008: skin measures'⁸⁹ all BCCs excised by healthcare professionals in the community should be audited. The PCT or LHB should make these audit results available to the LSMDT cancer network, PCT or LHB and the individual practitioner on a quarterly basis and they should be included in the cancer network annual audit (cancer standards 08-6A-103J⁹⁰). The quarterly dataset should be a standard PCT or LHB contract monitoring item for the DES.

Individual healthcare professionals should be responsible for collating their individual audit data for revalidation.

All GPs managing low-risk BCCs in the community should attend at least one educational meeting annually. This meeting should:

- be organised by the Cancer Network Site Specific Group

⁸⁸ National Institute for Health and Clinical Excellence (2006) Improving outcomes for people with skin tumours including melanoma. Available from www.nice.org.uk/CSGSTIM

⁸⁹ National Cancer Peer Review Programme (2008) Manual for cancer services 2008: skin measures. Available from www.ncpr.nhs.uk/index.php?menu=resources

⁹⁰ National Cancer Peer Review Programme (2008) Manual for cancer services 2008: skin measures. Available from www.ncpr.nhs.uk/index.php?menu=resources

- present the 6-monthly BCC network audit results along with a breakdown of individual healthcare professional data
- include one CPD session (a total of 4 hours) on the diagnosis and management of low-risk BCCs
- be run at least twice a year.

GPs should provide evidence of an annual review of clinical compared with histological accuracy in diagnosis for the low-risk BCCs they have managed.

The LSMDT should source suitable patient-reported outcome measures for the treatment of BCCs.

Quality standards against which performance can be managed/monitored should be reflected in the national skin cancer minimum dataset⁹¹.

Improved quality of data collection for BCC should be implemented by cancer peer review following the publication of the national skin cancer minimum dataset⁹².

All BCCs should be registered by cancer registries to allow national, regional and local epidemiology and health service epidemiological studies to take place.

Clinical governance

All community dermatology services that include skin cancer should ensure that:

- Clinical governance arrangements are in place for all healthcare professionals providing these services (including private providers contracted to treat NHS patients) and they are accredited to perform skin lesion excisions.
- All healthcare professionals providing these services work to agreed local clinical protocols for referral, treatment and follow-up. These should be coherent with network-wide clinical protocols and signed off by the network site specific lead for skin cancer.

⁹¹ www.ncin.org.uk/

⁹² Available from the National Cancer Intelligence Network (NCIN): www.ncin.org.uk/index.shtml

Healthcare professionals managing skin lesions in the community should obtain informed consent before any treatment is undertaken^{93,94,95}.

*Improving Outcomes for
People with Skin Tumours
including Melanoma (update)*

Recommendations

The recommendations in this guidance and other national clinical guidelines⁹⁶ should be used in the development of local protocols and guidelines at the cancer network level.

Communication

All healthcare professionals managing BCCs in the community should provide information, advice and support for patients and their families or carers.

4

⁹³ Department of Health Guidance on informed consent. Available from www.dh.gov.uk/prod_consum_dh/groups/dh_digitalassets/documents/digitalasset/dh_103653.pdf

⁹⁴ General Medical Council (GMC) guidance on informed consent. Available from www.gmc-uk.org/static/documents/content/Consent_2008.pdf

⁹⁵ Welsh Assembly Government Guidance on informed consent. Available from www.wales.nhs.uk/consent

⁹⁶ Telfer NR, Colver GB, Morton CA (2008) Guidelines for the management of basal cell carcinoma. *British Journal of Dermatology* 159: 35–48

Linking evidence to recommendations

*Improving Outcomes for
People with Skin Tumours
including Melanoma (update)*

*Linking evidence to
recommendations*

The GDG reviewed a number of types of evidence in the process of assessing the fitness for purpose of the existing NICE guidance on skin cancer services⁹⁷ pertaining to the identification, referral and management of low-risk BCC. This included:

- an overview of the epidemiology of BCC and how it is managed in the NHS
- a summary of methods for defining high- and low-risk BCC, including the clinical definitions included in the 'Manual for cancer services: skin measures'⁹⁸
- preliminary data from the 2009 skin cancer services peer review process, presented by the National Cancer Action Team⁹⁹
- undergraduate and postgraduate training requirements for GPs in skin lesion recognition and management
- an evidence review undertaken to examine the question 'Do outcomes differ when the excisional surgery of a suspicious lesion is performed by a GP compared with a specialist in secondary care?'

5

There was no high-quality evidence comparing the management of BCC by GPs working in the community with specialists in secondary care, so the GDG considered lower quality evidence such as audit data. The GDG was aware of the need to provide high-quality care close to the patient's home wherever possible. The evidence available suggested that better education and training for GPs was required, so

⁹⁷ National Institute for Health and Clinical Excellence (2006) Improving outcomes for people with skin tumours including melanoma. Available from www.nice.org.uk/CSGSTIM

⁹⁸ National Cancer Peer Review Programme (2008) Manual for cancer services 2008: skin measures. Available from www.ncpr.nhs.uk/index.php?menu=resources

⁹⁹ National Cancer Peer Review: North Zone Reports 2009 (www.cquins.nhs.uk/?menu=resources)

the recommendations specify three models of competency with clear definitions of the types of skin lesion that can be managed within each model. The majority of recommendations were based on GDG consensus and their collective experience and expertise to identify good clinical practice.

*Improving Outcomes for
People with Skin Tumours
including Melanoma (update)*

*Linking evidence to
recommendations*

5

Research recommendations

*Improving Outcomes for
People with Skin Tumours
including Melanoma (update)*

Research recommendations

The GDG has made the following recommendations for research, based on its review of the evidence, to improve NICE guidance and patient care in the future.

Epidemiology of basal cell carcinoma

What is the true nature of the epidemiology of BCC and the burden on NHS services?

Why this is important

The true incidence of BCC in England and Wales is not known because many cancer registries do not record BCC and those that do only record the first lesion. Many people develop multiple BCCs. The lack of epidemiological data makes health service planning very difficult. Research is required on ways to improve the recording of BCC cases.

6

Recurrence rate and cosmetic outcome of low-risk basal cell carcinoma

For patients with low-risk BCC treated in the community, what are the factors that predict recurrence of treated low-risk BCC and what factors predict a good cosmetic result?

Why this is important

The definition of low-risk BCC used in this document was based principally on clinical consensus as to the lesions that could be safely treated by non-specialists. Research is required to establish the factors that predict recurrence rate and good cosmetic outcome in low-risk BCC.

Difference in recurrence rate and cosmetic outcome of basal cell carcinoma resected by different groups of healthcare professionals

*Improving Outcomes for
People with Skin Tumours
including Melanoma (update)*

Research recommendations

Is there a difference in outcome for patients whose low-risk BCCs are resected by the different groups of healthcare professionals proposed in this guidance?

Why this is important

The treatment of low-risk BCC by the different groups of healthcare professionals described in the models of care proposed in this guidance needs to be assessed for completeness of excision, recurrence rate and cosmetic outcome.

6

Evidence summary

*Improving Outcomes for
People with Skin Tumours
including Melanoma (update)*

Evidence summary

[References for this evidence summary are listed at the end of this section]

The evidence base for this topic consists of one randomised controlled trial (RCT), non-randomised observational studies (both prospective and retrospective), meeting abstracts presenting audit data, some audit data from specific health services and published correspondence. Almost half the evidence was generated from within the UK, with the other half generated from Australia and one paper published from New Zealand. Applicability of the Australian and New Zealand evidence is limited in the UK setting. This is due to the different health systems operating in New Zealand and Australia compared with the UK (in particular the way skin cancer lesions are managed in primary and secondary care).

In order to accurately evaluate the outcomes from excisional surgery of a suspicious skin lesion performed by a GP compared with a specialist in secondary care, the ideal study would require the randomisation of patients to either of these settings and then assessment of the outcomes. The evidence body is limited in this sense, with only one study attempting to evaluate this question in this way (George et al. 2008). The remaining evidence comes from observational studies, mainly retrospective series, which involve potential bias with respect to data collection processes or patient/lesion selection criteria. Furthermore, this evidence did not consistently describe if the GP groups included were GPs with a special interest or not, therefore making it difficult to draw conclusions about the performance of GPs with a special interest or GPs (with no specialised training).

Overall, 11 studies (Carter et al. 2009; Dabrera and Wakeel 2007; De La Roche and Lucke 2008; George et al. 2008; Goulding et al. 2009; Khalid et al. 2009; Macbeth et al. 2009; Murchie et al. 2008; Neal et al. 2008; Su et al. 2007; Youl et al. 2007) with varying levels of potential methodological bias compared dermatologists with GPs or other clinical specialists. Eight of these studies indicated that margin clearance or complete excision is more adequately achieved by ('hospital' or 'specialist') dermatologists than GPs (Carter et al. 2009; Dabrera and Wakeel 2007; De La Roche and Lucke 2008;

7

Goulding et al. 2009; Khalid et al. 2009; Macbeth et al. 2009; Murchie et al. 2008; Neal et al. 2008).

Three of the 11 studies reported the following:

- The equivalence study by George et al. (2008) compared three outcomes of minor surgery, including the excision of suspected skin cancers, and was conducted in primary care or at a hospital in the south of England. Statistically, hospital doctors scored higher marks than GPs in surgical quality (odds ratio [OR] = 1.64, 95% confidence interval [CI] 0.997–2.69%) but, as this was an equivalence study, the authors found the clinical significance of this result difficult to interpret. GPs failed to recognise a malignant lesion about one third of the time but were good at recognising benign lesions. Hospital doctors achieved more adequate excisions than GPs but the difference was not significant and, with such a low patient number, firm conclusions should not be drawn from this result. Patients were more satisfied with treatment in primary care and found it less inconvenient than attending hospital.
- Su et al. (2007) reported the incidence of incomplete excision at a tertiary referral public hospital. There was no significant difference in the percentage of incomplete excision between consultants, registrars and the clinical assistant, but the low numbers of cases performed by consultants may have contributed to this result.
- Youl et al. (2007) compared the ability of GPs or hospital doctors to correctly recognise malignant skin lesions. Hospital doctors were statistically better in the detection of BCCs and malignant melanomas but not SCCs. GPs and hospital doctors were of equal ability in the detection of benign skin lesions.

Importantly, the evidence body lacked sufficient evidence of difference between GPs and dermatologists in terms of long-term patient outcomes. Recurrence is one key outcome and was addressed by only one study in this update (Wylie and Dawn 2009). The study compared guideline recommendations and actual current practice. Fifty-three dermatologists were involved in an anonymous online questionnaire. When asked to respond to a clinical case example, which asked for the likely excision margin (1 mm to > 4 mm) for a primary well-defined nodular BCC measuring 1 cm on the mid-forehead, 33% suggested they would excise with a margin of 2 mm or less and only 32% gave 4 mm or greater as their response. Similarly wide variations in practice were found with examples for high- and low-risk SCC and also for initial primary melanoma excision. Higher grade of operator and frequency of surgery were linked with smaller margins. The largest margins (more closely following recommended guidelines) came from British Society of Dermatology Surgery

members, although not exclusively. Overall it was concluded that, in terms of providing adequate clearance and reducing recurrence rates, the results indicated marked discrepancies.

In conclusion, the retrospective studies, although flawed, do indicate a consistent trend of current practices and outcomes in favour of specialist care in this setting. The controlled study by George et al. (2008) provides an important framework for further research which, along with more well-conducted studies using reliable audit data, should lead to more adequate reporting of the outcomes of excisional surgery in future.

[The full evidence review is presented as a separate document that accompanies this guidance update]

References for evidence summary

- Carter EJ Whittam LR, Buckley DA (2009) Failure of adherence to NICE guidelines for skin cancer surgery in general practice. *British Journal of Dermatology* 161 (Suppl. 1): 63
- Dabrera G, Wakeel R (2007) Is the adequacy of excision of basal cell carcinoma related to operator experience? *Clinical and Experimental Dermatology* 32: 103–4
- De La Roche HM, Lucke Y (2008) Audit of excision rates of BCCs in primary and secondary care in a county over 1 year. *British Journal of Dermatology* 159 (Supp. 1): 111–2
- George S, Pockney P, Primrose J et al. (2008) A prospective randomised comparison of minor surgery in primary and secondary care. The MiSTIC trial. *Health Technology Assessment* 12 (23). Available from www.hta.ac.uk/1100
- Goulding JM, Levine S, Blizard F et al. (2009) Dermatological surgery: A comparison of activity and outcomes in primary and secondary care. *British Journal of Dermatology* 161: 110–4
- Khalid S, Spicer A, Gee B et al. (2009) The impact of Improved Outcome Guidance (IOG) for skin cancer: a comparative re-audit of excision rates of BCCs by general practitioners in South Warwickshire. *British Journal of Dermatology* 161 (Suppl. 1): 109
- Macbeth AE, Torley D, Casie Chetty N et al. (2009) Audit of incomplete excision rates of basal cell carcinoma: analysis of 1972 cases from four UK regions. *British Journal of Dermatology* 161: 710–2

Murchie P, Delaney EK, Thompson WD et al. (2008) Excising basal cell carcinomas: comparing the performance of general practitioners, hospital skin specialists and other hospital specialists. *Clinical and Experimental Dermatology* 33: 565–71

Neal RD, Cannings-John R, Hood K et al. (2008) Excision of malignant melanomas in North Wales: effect of location and surgeon on time to diagnosis and quality of excision. *Family Practice* 25: 221–7

Su SY, Giorlando F, Ek EW et al. (2007) Incomplete excision of basal cell carcinoma: a prospective trial. *Plastic and Reconstructive Surgery* 120: 1240–8

Wylie G, Dawn G. (2009) Audit of Scottish dermatologists' skin cancer surgical excision margins. *British Journal of Dermatology* 161 (Suppl. 1): 37

Youl PH, Baade PD, Janda M et al. (2007) Diagnosing skin cancer in primary care: how do mainstream general practitioners compare with primary care skin cancer clinic doctors? *The Medical Journal of Australia* 187: 215–20

Appendix 1: People and organisations involved in production of the guidance

*Improving Outcomes for
People with Skin Tumours
including Melanoma (update)*

Appendix 1

A1

- 1.1 Members of the Guidance Development Group (GDG)
- 1.2 Organisations invited to comment on guidance development
- 1.3 Individuals carrying out literature reviews and complementary work
- 1.4 Members of the Guideline Review Panel
- 1.5 NICE project team

Appendix 1.1: Members of the Guidance Development Group (GDG)

*Improving Outcomes for
People with Skin Tumours
including Melanoma (update)*

GDG Chair

Appendix 1

Dr Julia Verne Deputy Regional Director of Public Health
and South West Public Health Observatory
Director

Group members

Mrs Fiona Bonas	Director, 3 Counties Cancer Network
Dr Timothy Cunliffe	GPwSI in Dermatology and Skin Surgery, Middlesborough Specialist Skin Service
Dr Bruce Eden	GP Advisor to Greater Midlands Cancer Network
Dr Antony Feltbower	GP, Coventry
Ms Gillian Godsell OBE	Skin Cancer Clinical Nurse Specialist, Nottingham University Hospital NHS Trust
Dr Stephen Keohane	Consultant Dermatologist, Portsmouth Hospital
Dr David Marshall	GP, Reading
Mr Barry Powell	Consultant Plastic Surgeon, St George's Hospital, London
Dr Julia Schofield	Principal Lecturer, University of Hertfordshire and Consultant Dermatologist, United Lincolnshire Hospital NHS Trust
Mrs Sylvia Toresen	Patient/carer member
Mrs Pippa Tostevin	Patient/carer member

A1

Declarations of interest

*Improving Outcomes for
People with Skin Tumours*

GDG members were asked to declare any possible conflicts of interest *including Melanoma (update)* that could interfere with their work on the guidance.

Appendix 1

GDG member	Interest declared	Type of interest	Decision taken
Julia Schofield (JS)	Received an honorarium from Leo Pharm Lecture to give a lecture on GPwSI accreditation and community cancer services	Personal pecuniary specific	Declare. Must withdraw from discussions on topics that focus on GPwSI accreditation until Jan 2010. Chairperson's action taken that JS can be asked specific technical questions about GPwSI accreditation.
	Received an honorarium from Schering Plough to give a lecture on commissioning dermatology services	Personal pecuniary non-specific	Declare. Can participate in discussions as the meeting was not specific to skin cancer.

A1

Appendix 1.2: Organisations invited to comment on guidance development

*Improving Outcomes for
People with Skin Tumours
including Melanoma (update)*

Appendix 1

The following stakeholders registered with NICE and were invited to comment on the draft version of this guidance

- Association of British Insurers (ABI)
- Association of Chartered Physiotherapists in Oncology and Palliative Care
- Association of Surgeons in Primary Care
- Associazione Infermieristica per lo Studio delle Lesioni Cutanee (AISLeC)
- AstraZeneca UK Ltd
- British Medical Journal (BMJ)
- Brighton and Sussex University Hospitals Trust
- British Association of Dermatologists, The
- British Association of Oral and Maxillofacial Surgeons
- British Association of Plastic Reconstructive and Aesthetic Surgeons (BAPRAS)
- British Dietetic Association
- British Medical Association (BMA)
- British National Formulary (BNF)
- British Nuclear Medicine Society
- British Society for Dermatopathology
- Cambridge University Hospitals NHS Foundation Trust (Addenbrookes)
- Cancer Research UK
- Care Quality Commission (CQC)
- Central South Coast Cancer Network
- College of Occupational Therapists

A1

- Commission for Social Care Inspection
- Connecting for Health
- ConvaTec
- Cornwall & Isles of Scilly PCT
- County Durham PCT
- Criminal Justice Women's Strategy Unit
- Department of Health
- Department of Health Advisory Committee on Antimicrobial Resistance and Healthcare Associated Infection (ARHAI)
- Dorset Cancer Network
- Dudley Group of Hospitals NHS Trust
- East and North Herts NHS Trust
- East Lancashire Hospitals NHS Trust
- East Midlands Cancer Network
- Gloucestershire Hospitals NHS Trust
- Gorlin Syndrome Group
- Greater Midlands Cancer Network
- Guy's and St Thomas NHS Foundation Trust
- Huntingdon Community Dermatology Service
- Institute of Biomedical Science
- Johnson & Johnson Medical
- Juvenile Diabetes Research Foundation
- Leeds PCT
- Leeds Teaching Hospitals NHS Trust
- LEO Pharma
- Liverpool PCT Provider Services

- Luton & Dunstable Hospital NHS Foundation Trust
- Macmillan Cancer Support
- Medicines and Healthcare Products Regulatory Agency (MHRA)
- Met Office
- Ministry of Defence (MoD)
- National Patient Safety Agency (NPSA)
- National Public Health Service for Wales
- National Treatment Agency for Substance Misuse
- Newcastle Upon Tyne Hospitals NHS Foundation Trust
- NHS Bedfordshire
- NHS Clinical Knowledge Summary Service (SCHIN)
- NHS Direct
- NHS Improvement
- NHS Northamptonshire
- NHS Plus
- NHS Quality Improvement Scotland
- NHS Sefton
- NHS Sheffield
- North East Lancashire NHS Trust
- North East Lincolnshire Care Trust Plus
- North East London Cancer Network
- North London Cancer Network
- North Trent Cancer Network
- North West London Cancer Network
- Northwick Park and St Mark's Hospitals NHS Trust

- Nottinghamshire County Teaching PCT
- Patients' Council
- Peninsula Cancer Network
- PERIGON Healthcare Ltd
- Plymouth PCT
- Poole and Bournemouth PCT
- Primary Care Dermatology Society
- Royal College of Anaesthetists
- Royal College of General Practitioners
- Royal College of General Practitioners Wales
- Royal College of Midwives
- Royal College of Nursing
- Royal College of Obstetricians and Gynaecologists
- Royal College of Paediatrics and Child Health
- Royal College of Pathologists
- Royal College of Physicians London
- Royal College of Psychiatrists
- Royal College of Radiologists
- Royal College of Surgeons of England
- Royal Free Hospital NHS Trust
- Royal Pharmaceutical Society of Great Britain
- Sandwell PCT
- Schuco International (London) Ltd
- Scottish Intercollegiate Guidelines Network (SIGN)
- Sheffield Children's NHS Foundation Trust

- Sheffield Teaching Hospitals NHS Foundation Trust
- Skin Care Campaign
- Skincheck Ltd.
- Social Care Institute for Excellence (SCIE)
- Social Exclusion Task Force
- Society and College of Radiographers
- Society of Chiropractors & Podiatrists
- South West Autistic Rights Movement
- St George's Healthcare NHS Trust
- Teenage Cancer Trust, The
- Teenagers and Young Adults with Cancer (TYAC)
- Thames Valley Cancer Network
- UK Skin Lymphoma group
- University College London Hospitals (UCLH) Acute Trust
- Welsh Assembly Government
- Welsh Scientific Advisory Committee (WSAC)
- West Kent PCT
- Western Health and Social Care Trust
- Whittington Hospital Trust
- York NHS Foundation Trust

A1

Appendix 1.3: Individuals carrying out literature reviews and complementary work

*Improving Outcomes for
People with Skin Tumours
including Melanoma (update)*

Appendix 1

Overall Coordinators

Dr John Graham Director, National Collaborating
Centre for Cancer, Cardiff

Dr Andrew Champion Centre Manager, National
Collaborating Centre for Cancer,
Cardiff

Project Manager

Lianne Black National Collaborating Centre for
Cancer, Cardiff

Senior Researcher

Angela Melder National Collaborating Centre for
Cancer, Cardiff

Researcher

Karen Francis National Collaborating Centre for
Cancer, Cardiff

Information Specialist

Stephanie Arnold National Collaborating Centre for
Cancer, Cardiff

Health Economist

Sarah Willis London School of Hygiene and
Tropical Medicine

A1

Appendix 1.4: Members of the Guideline Review Panel

*Improving Outcomes for
People with Skin Tumours
including Melanoma (update)*

Appendix 1

The Guideline Review Panel is an independent panel that oversees the development of the guideline and takes responsibility for monitoring its quality. The members of the Guideline Review Panel are:

Dr John Hyslop – Chair

Consultant Radiologist, Royal Cornwall Hospital NHS Trust

Dr Ash Paul

Deputy Medical Director, Health Commission Wales

Professor Liam Smeeth

Professor of Clinical Epidemiology, London School of Hygiene and Tropical Medicine

Mr Peter Gosling

Lay member

Mr Johnathan Hopper

Medical Director (Northern Europe), ConvaTec Ltd

A1

Appendix 1.5: NICE project team

Centre for Clinical Practice Lead

Fergus Macbeth

Guideline Commissioning Manager

Claire Turner

Guideline Coordinator

Emma Banks

Editor

Katie Prickett

Patient involvement lead

Barbara Meredith

*Improving Outcomes for
People with Skin Tumours
including Melanoma (update)*

Appendix 1

A1

Appendix 2: Glossary of terms

*Improving Outcomes for
People with Skin Tumours
including Melanoma (update)*

Appendix 2

A2

Basal cell carcinoma (see Table 1)

A type of cancer that arises from the basal cells, small round cells found in the lower part (or base) of the epidermis, the outer layer of skin.

Biopsy

Removal of a sample of tissue from the body to assist in diagnosis of disease.

Cancer

Growth of altered body cells that keep on growing, which is able to spread from where it started to another part of the body.

Carcinoma

Cancer of the lining tissue that covers all the body organs.

Cautery

The application of a hot instrument, an electrical current, a caustic substance or other substance to kill certain types of small tumours or seal-off blood vessels to stop bleeding.

Clinician

A healthcare professional providing patient care, for example, a doctor, nurse or physiotherapist

Cosmetic result

Outcome of appearance after treatment.

Cryosurgery

A procedure performed with an instrument that freezes and destroys abnormal tissue.

Cryotherapy

A treatment that uses cold temperature to remove cells or tissue by freezing.

Curettage

Removal of tissue with a curette, a spoon-shaped instrument with a sharp edge.

Dermis

The sensitive connective tissue layer of the skin located below the epidermis, containing nerve endings, sweat and sebaceous glands, and blood and lymph vessels. Also called corium, cutis vera or derma.

A2

Epidemiology

The study of populations in order to determine the frequency and distribution of disease and to measure risks.

Excision

The act of surgically removing or 'cutting out' tissue from the body.

Gorlin's syndrome

An inherited condition that can increase an individual's chance of developing basal cell carcinoma. Also called basal cell nevus syndrome.

Health Service Epidemiology

The framework for the facts that enable health officials to identify important health problems and to define their dimensions. Epidemiologic methods are used to define these health problems; to classify, identify and explain their causes.

Healthcare professional

Any individual, institution or agency that provides health services.

Histological

Relating to the study of cells and tissue on the microscopic level.

Immunosuppression

Suppression of the body's immune system and its ability to fight infections or disease. Immunosuppression may be deliberately induced with drugs. It may also result from certain diseases such as lymphoma or from anticancer drugs.

Incidence

The number of new cases of a disease in a given time period.

Incidence rates

The number of new cases per 100,000 population. This may also be age standardised to account for differences in the age structure of populations or age specific for specific age groups.

Lesion

An area of abnormal tissue.

Local Health Board

The group of people responsible for all healthcare services for a geographical area within Wales.

A2

Management

Assessment of a lesion and patient, and recommendation of treatment or monitoring options.

Margins

The edge of the tissue removed.

Medical treatment

Care of a patient and management of their condition.

Minimum dataset

A widely agreed upon and generally accepted set of terms and definitions making up a core of data required for medical records and used for developing statistics for different types of analyses and users.

Mohs micrographic surgery

A surgical technique used to treat skin cancer. Individual layers of cancerous tissue are removed and examined under a microscope one at a time until all cancerous tissue has been removed.

Multidisciplinary team

A team with members from different healthcare professions (for example, surgery, oncology, pathology, radiology, nursing)

Patient

A person who requires medical care.

Perineural

Around a nerve or group of nerves.

Photodynamic therapy

Treatment with drugs that become active when exposed to light. These drugs kill cancer cells.

Practitioner

A person qualified and registered to practice a learned profession.

Primary Care Trust

A type of NHS trust that is responsible for all healthcare services for a geographical area within England.



Radiotherapy

The use of radiation, usually X-rays or gamma rays, to kill cancer cells and treat tumours.

Secondary care

Services provided by a multidisciplinary team in a hospital, as opposed to a GP and a primary care team.

Superficial BCC (see Table 1)

A subtype of basal cell carcinoma that occurs most commonly on the trunk.

Squamous cell carcinoma

Cancer that begins in squamous cells. Squamous cells are found in the tissue that forms the surface of the skin, the lining of the hollow organs of the body, and the passages of the respiratory and digestive tracts. Also called epidermoid carcinoma.

Topical treatment

Treatment with drugs in a lotion, ointment or cream applied to the skin.

Appendix 3: Abbreviations

*Improving Outcomes for
People with Skin Tumours
including Melanoma (update)*

Appendix 3

BCC	basal cell carcinoma
CPD	continuing professional development
DES	direct enhanced service
DH	Department of Health
DOPs	direct observation of procedural skills
GDG	guidance development group
GP	general practitioner
GPwSI	general practitioner with special interest
LES	local enhanced service
LHB	Local Health Board
LSMDT	local hospital skin cancer multidisciplinary team
MDT	multidisciplinary team
MM	malignant melanoma
NAEDI	National Awareness and Early Diagnosis
NCAT	National Cancer Action Team
NCRI	National Cancer Research Institute
NICE	National Institute for Health and Clinical Excellence
PCT	Primary Care Trust
PDT	photodynamic therapy

A3

SAS	specialist and associate specialist
SCC	squamous cell carcinoma
SS1	GPwSIs offering basic skin surgery
SS2	GPwSIs offering basic skin surgery and more advanced surgery
SSMDT	specialist skin cancer multidisciplinary team
SWPHO	South West Public Health Observatory
UKACR	United Kingdom Association of Cancer Registries

Appendix 4: Deleted recommendations from 2006 guidance

The table below lists the recommendations on the management of low-risk BCCs in the community that have been withdrawn from the 2006 NICE guidance on cancer services ‘Improving outcomes for people with skin tumours including melanoma’ (available from www.nice.org.uk/CSGSTIM) and are superseded by the recommendations presented in this update.

A4

Section heading in 2006 guidance	Recommendation withdrawn
Key recommendations	Patients with low-risk basal cell carcinomas (BCCs) (see ‘Glossary of terms’, Appendix 6, for definitions) should be diagnosed, treated and followed up by doctors working in the community as part of the LSMDT/SSMDT (usually a GP with a special interest in dermatology [GPwSI]), or a local hospital skin cancer specialist, normally a dermatologist, who is a member of the LSMDT/SSMDT and to whom they have been directly referred. Where there is doubt about the lesion being low or high grade, the patient should be referred directly to the LSMDT/SSMDT.
Organisation of skin cancer services	<p>Cancer networks</p> <p>Doctors who knowingly treat skin cancer patients in the community should be members of an LSMDT/SSMDT. As they will be treating only those patients with low-risk BCC and precancerous skin lesions (see section on ‘Clinicians working in the community’), they will not have the same requirement for attendance at an MDT as other members, but would be expected to attend at least four meetings a year, one of which should be an audit meeting. They would also be expected to attend if one of their patients is to be discussed.</p> <p>Clinicians working in the community</p> <p>For the following recommendation, only the text in bold has been withdrawn: This guidance recommends that while precancerous lesions can be safely managed by any GP who has undergone</p>

appropriate training (as outlined in the NICE Referral guidelines for suspected cancer), the planned treatment of low-risk BCCs should be restricted to approved doctors working in the community, usually a GPwSI (as described in this section), or the LSMDT/SSMDT. All other skin cancers should be referred to the LSMDT in the first instance.

All doctors and specialist nurses working in the community who knowingly treat skin cancer patients should be approved by, and be accountable to, the local LSMDT/SSMDT skin cancer lead clinician. They should work closely together to agreed local clinical protocols for referral, treatment and follow-up. These should be coherent with network-wide clinical protocols and signed off by the network site-specific lead for skin cancer.

Any doctor or specialist nurse who wishes to treat patients with skin cancer should have specialist training in skin cancer work, be a member of the LSMDT and undergo ongoing education (see section on 'Structure and clinical governance'). In the absence of a national body to determine the surgical training within the remit of skin cancer, this should be determined by the network site-specific group for skin cancer and be consistent with the NICE Referral guidelines for suspected cancer. All doctors participating in the MDT should have a letter of appointment from the MDT lead clinician. Ideally all doctors treating patients with skin cancer should have attended a recognised skin surgical course. They should also work at least one session per week as a clinical assistant, hospital practitioner, associate specialist or staff-grade doctor in the local hospital department. This should be in a parallel clinic with an appropriate hospital specialist, normally a dermatologist, who is a member of the LSMDT/SSMDT. This applies to GPwSIs as well, as specified in the joint recommendations by the DH, RCGP and BAD. This is considered essential to maintain skills and promote dialogue with the specialist.

A basic knowledge of skin cancer histopathology reporting and terminology is expected. Eligible doctors should either be GPwSIs employed by the PCT/LHB or non-career-grade doctors employed by the hospital trust. PCTs and LHBs should only accredit GPwSIs for skin cancer work if they comply completely with the DH, RCGP and BAD guidelines on GPwSI working. The recommendations include the need for the GPwSI to work at least one session per week in the special interest area. The majority of the practitioner's time should be spent as a GP, and this is usually considered to be at least three sessions per week.

	<p>The role of the doctor working in the community</p> <p>The doctor working in the community should:</p> <ul style="list-style-type: none"> • Manage and follow up, when indicated, patients with low-risk BCCs and precancerous lesions in the community (see Box 1 and Figure 14) by working to agreed protocols as defined by the lead clinician of the LSMDT/SSMDT. • Provide a rapid referral service for patients who require specialist management through the LSMDT or SSMDT. • Be responsible for the provision of information, advice and support for patients managed in primary care and their carers. • Maintain a register of all patients treated, whose care should be part of a regular audit presented to the LSMDT/SSMDT. • Liaise and communicate with all members of the skin cancer site-specific network group. • Ensure that referring GPs are given prompt and full information about their patients' diagnosis or treatment in line with national standards on communication to GPs of cancer diagnoses. • Collect data for network-wide audit.
<p>Initial investigation, diagnosis, staging and management</p>	<p>Management of skin cancers</p> <p>Only doctors and nurses who have received locally approved training and who are active members of a skin cancer MDT should carry out surgery for skin cancers. Scar placement and management should be considered before surgery.</p>



National Institute for Health and Clinical Excellence

MidCity Place
71 High Holborn
London WC1V 6NA

Web: www.nice.org.uk

Copies of this document can be obtained from the NHS Response Line by telephoning 0870 1555 455 and quoting reference N0957. Information for the public is also available from the NHS Response Line (reference number N0958). A CD-ROM with all documentation, including the research evidence on which the guidance is based, is available from the NHS Response Line (reference N0959).

Published by the National Institute for Health and Clinical Excellence

May 2010

© National Institute for Health and Clinical Excellence, 2010. All rights reserved. This material may be freely reproduced for educational and not-for-profit purposes. No reproduction by or for commercial organisations, or for commercial purposes, is allowed without the express written permission of NICE.