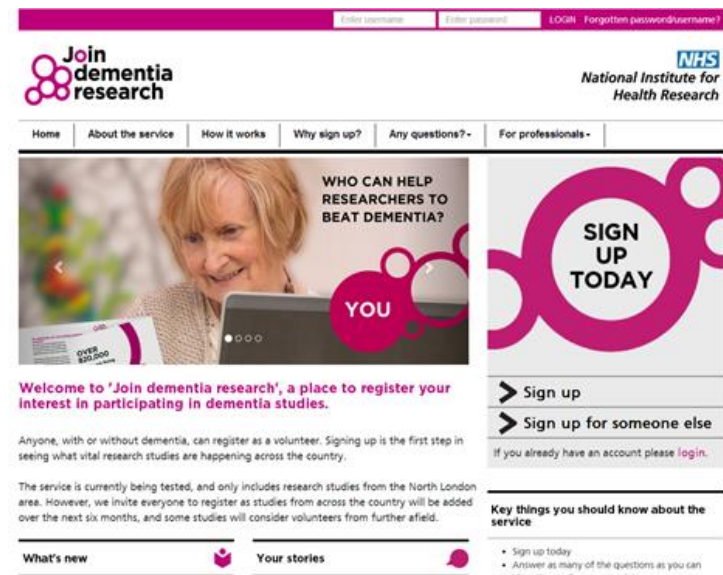




[www.joindementiaresearch.nihr.ac.uk](http://www.joindementiaresearch.nihr.ac.uk)

# What is 'Join dementia research'?

...a nationwide **online and telephone service** that will help you find, discover and take part in vital dementia research studies



The screenshot shows the homepage of the 'Join dementia research' website. At the top, there are navigation links for 'Home', 'About the service', 'How it works', 'Why sign up?', 'Any questions?', and 'For professionals'. The main content area features a large image of an elderly woman looking at a laptop, with the text 'WHO CAN HELP RESEARCHERS TO BEAT DEMENTIA?' and 'YOU' overlaid. Below this, a prominent 'SIGN UP TODAY' button is visible. The page also includes a welcome message: 'Welcome to 'Join dementia research', a place to register your interest in participating in dementia studies.' and a list of 'Key things you should know about the service' such as 'Sign up today', 'Answer as many of the questions as you can', and 'View the studies you match to'.

[www.joindementiaresearch.nihr.ac.uk](http://www.joindementiaresearch.nihr.ac.uk)

## Why is it useful?

It is only through **research** that we can develop **effective treatments, improve care and one day find a cure.**

So if you are **looking for studies** to take part in, but don't know where to find them, please visit:



[www.joindementiaresearch.nihr.ac.uk](http://www.joindementiaresearch.nihr.ac.uk)

## So what are the benefits of signing up?



**Find** studies matching your information



**Connect** with researchers and express an interest in their studies



**Discover** exciting new studies



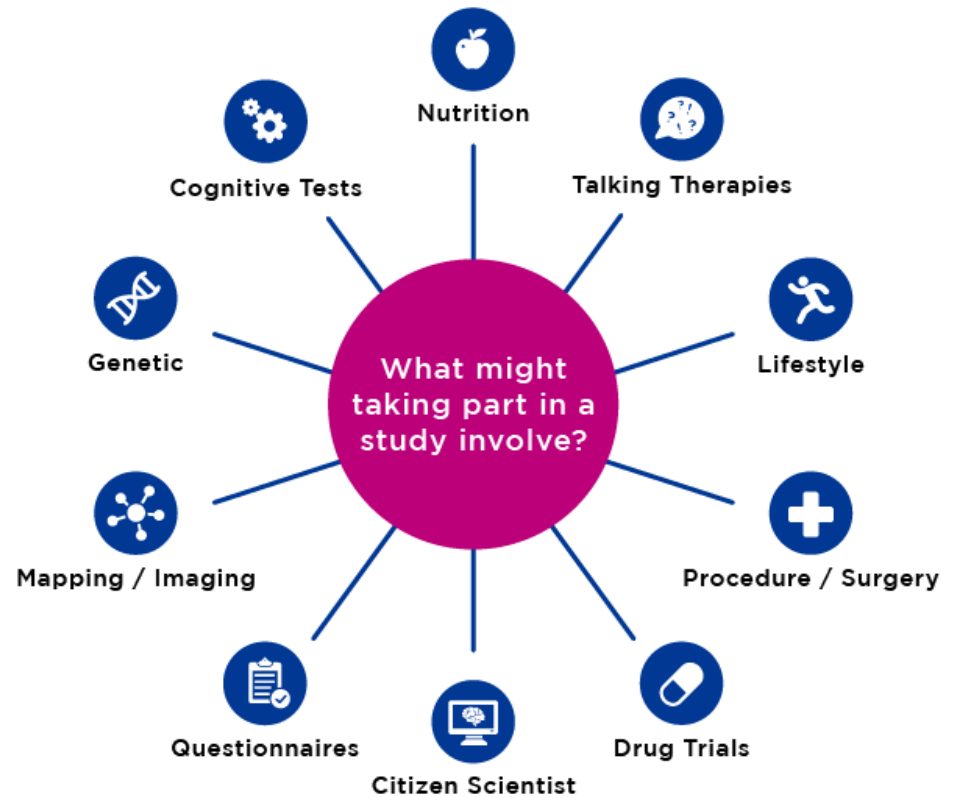
**Help** to improve dementia care and treatment



[www.joindementiaresearch.nihr.ac.uk](http://www.joindementiaresearch.nihr.ac.uk)

# What kind of studies?

...from **clinical trials of new treatments to surveys** identifying what works in improving the quality of life for people with dementia.



[www.joindementiaresearch.nihr.ac.uk](http://www.joindementiaresearch.nihr.ac.uk)

## Who can help dementia research?

- ❑ Anyone **with** and **without** dementia over the age of 18 can register and people can [register on behalf of someone else](#).
- ❑ You do not have to take part in any studies. It is always **your choice** to take part or not.



[www.joindementiaresearch.nihr.ac.uk](http://www.joindementiaresearch.nihr.ac.uk)

## How do I sign up?

- ❑ It takes **5-10** minutes to sign up.
- ❑ You just need to provide some **demographic and health information** which will enable the service to match you to suitable studies.
- ❑ Visit the website, or for help call:
  - ❖ Alzheimer's Research UK (0300 111 5 111)
  - ❖ Alzheimer's Society (0300 222 1122)



[www.joindementiaresearch.nihr.ac.uk](http://www.joindementiaresearch.nihr.ac.uk)