



Adult Community Services

Avni Shah

Programme Director – Planned and Primary Care(Herts Valleys)



Setting the Scene:

Why we're doing what we're doing ...



Setting the Scene

Community Services are key to our *Your Care, Your Future* ambitions and to the Hertfordshire and West Essex Sustainability and Transformation Programme.

Redesigning acute provision

Moving care closer to home

Developing more integrated services

Developing the right systems, technology and skills



Setting the Scene

“**Unnecessary journeys to hospital can be reduced** by providing care closer to home”

“Local services **need to change**”

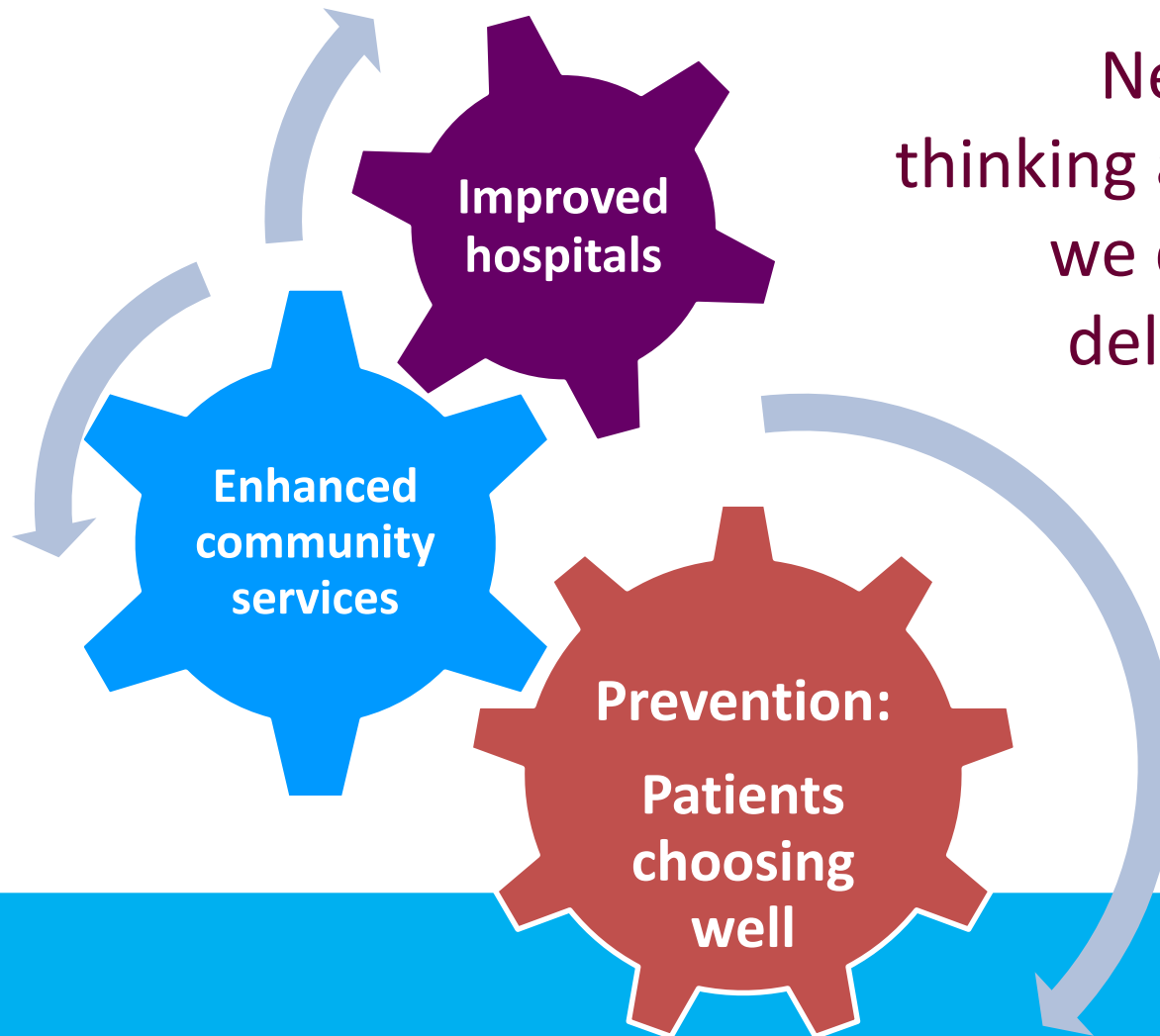
“Professionals and care **should be joined up**”

“More **focus on preventing ill-health** and addressing unhealthy lifestyles”

“Build on existing community services so more people benefit from the **care and support of voluntary organisations**”

“People should **take more responsibility** for their own health”

Setting the Scene



New ways of thinking about how we design and deliver health services

Setting the Scene

Key themes:

- ✓ Supporting people to stay safe and well, promoting healthy living and preventing avoidable illness
- ✓ Developing more local, joined up health and care services
- ✓ Patients and carers taking an active part in their own care
- ✓ Behaviour change and choosing well
- ✓ Using community assets better
- ✓ 40% of hospital trips shifted to a community setting by 2024



Re-designing the Adult Community Services Offer

Why have we taken this decision?

- ✓ Analysis has shown that some services could achieve more for the money we have to spend
- ✓ Opportunity for the CCG to invest more to improve the Adult Community Services offer to residents and linked services such as GPs and Acute services
- ✓ Opportunities to work with voluntary and community sector and social Care partners, to achieve system-wide benefits
- ✓ Improving the transformation trajectory ... moving further faster
- ✓ Improved customer experience

Re-designing the Adult Community Services Offer

Greater focus on preventing ill-health happening or worsening

We want people to live well, and stay well, for as long as they can by:

- ✓ working with councils, communities and the voluntary sector to improve factors like housing and heating
- ✓ helping vulnerable residents and carers to overcome social isolation and get support
- ✓ helping people to make healthy lifestyle choices





Re-design principles:

How we're doing what we're doing ...



Services in scope

- ✓ Integrated Community Nursing and Therapy Services
- ✓ Community Intermediate Care Beds
- ✓ Specialist Palliative Care
- ✓ Bladder and Bowel
- ✓ Adult Speech and Language
- ✓ Lymphoedema
- ✓ Leg Ulcer and Tissue Viability Services
- ✓ Community Neuro Rehabilitation Service
- ✓ Podiatry (excluding Diabetes)
- ✓ Nutrition and Dietetics

Eight key functions

**1. Access &
Coordination**

**2. Prevention
& Self Care**

**3. Preventing
Admissions**

**4. Facilitated
& Supported
Discharge**

**5. Maximising
Independence**

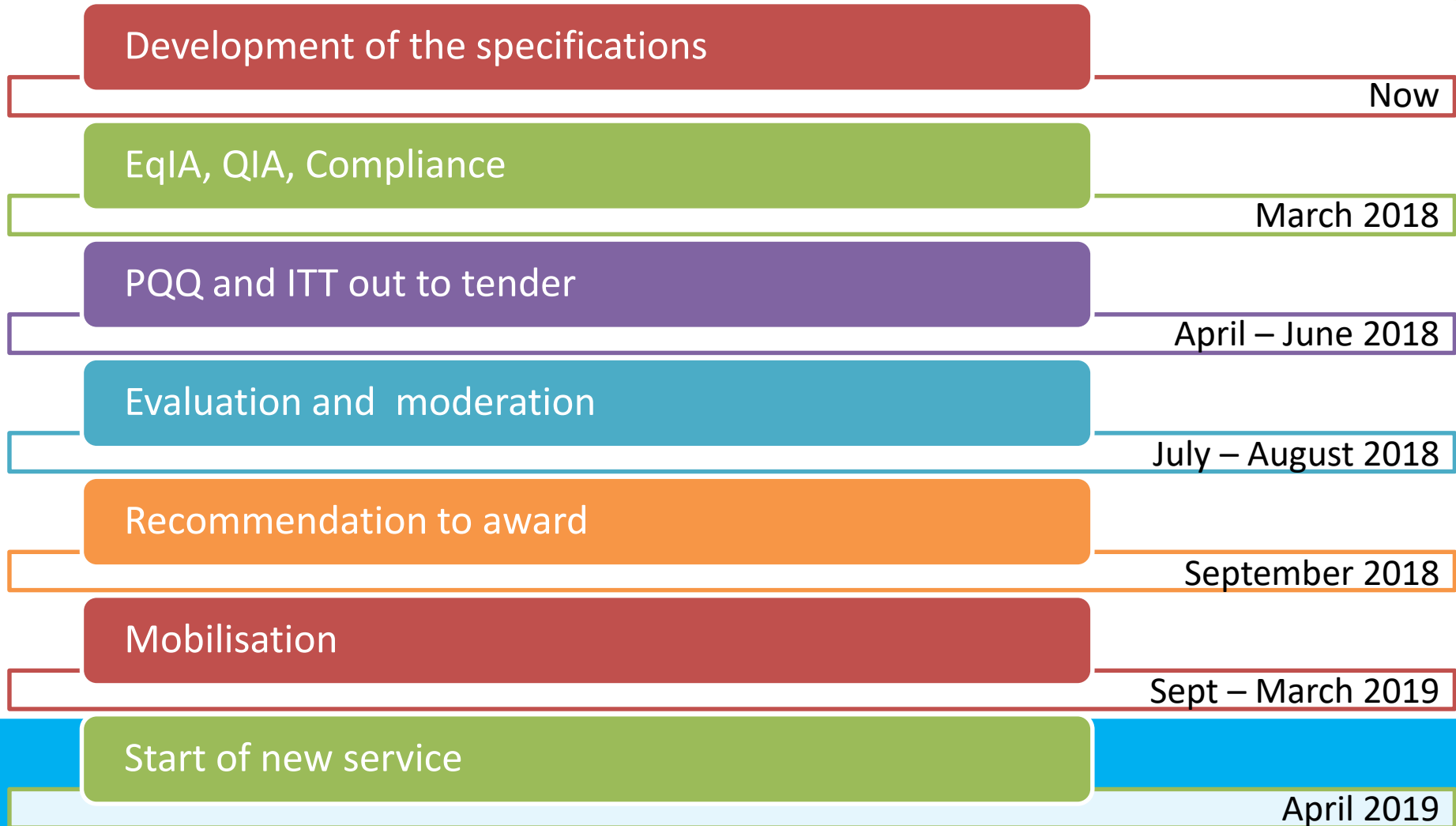
**6. Scheduled
Ongoing Care
& Support**

**7. Complex
Case
Management**

**8. Specialist
Input**

Any future specification will reinforce the importance of collaboration and integration with primary care, secondary care, social care and services provided through the voluntary and community sector

Indicative time line (subject to change)



Questions?

