

PRIORY GARDENS SURGERY

PRACTICE PROFILE



The Health Centre, Church Street, Dunstable, Beds. LU6 3SU
Tel: 01582 699 622 Email: Prioriy.Gardens@nhs.net www.priorygardenssurgery.co.uk

Contents

1	DOCTORS	3
	GP Partners:	3
	Salaried GPs:.....	3
2	NURSES / HCAs	3
	Nurse Prescribers	3
	Practice Nurse	3
	Health Care Assistants	3
3	THE PRACTICE TEAM	4
	Practice Manager	4
	Office Manager	4
	IT & Systems	4
	Medical Secretaries	4
	Medical Administration	4
	Organisation Chart	4
4	THE PRACTICE	5
	The Locality	5
	Premises	5
5	SURGERY OPENING TIMES	6
6	APPOINTMENTS	6
	Weekday Consultations	6
	Sit and Wait Clinic.....	6
	Standard Appointments.....	6
	Home Visits	6
7	ASSOCIATED STAFF WHO ATTEND THE PRACTICE.....	6
8	PRACTICE SERVICES.....	7
	Clinics:	7
	Other Clinics:	7

1 DOCTORS

GP Partners:

Dr Paul Hassan

Senior Partner
(6 Sessions)
MBBS London (1976)
DRCOG (1980)
MRCGP (1983)

Dr Azhar Hafeez

(8 Sessions)
MBBS (1999)
MRCS (2003)
MRCGP (2010)

Dr Nasir Hannan

(8 Sessions)
MBChB (2005)
MRCGP (2010)
Dip Derm (2011)

Dr Nadeem Hussain

(8 Sessions)
BSc Pharmacology (2006)
MBBS (2009)
RCGP (2015)

Salaried GPs:

Dr Mamta Bhatt

(5 Sessions)
MBBS (1995)
DRCOG (1999)
MRCGP (1999)
DFSRH (1999)
LoCIUD oC SDI (2008)

Dr Harsha Master

(4 Sessions)
Bse (2001)
MBBS (2003)
MRCGP (2008)
DFSRH (2008)

Dr Vijaya Ravikumar

(6 Sessions)
MBBS (1982)
DCH (1989)
MRCGP (2008)

2 NURSES / HCAs

Nurse Prescribers

Jayne Collins (Lead Nurse)
Sara Lake

Diabetes. Minor Illness.
INR – Anti-Coagulation. Minor Illness.

Practice Nurse

Amy Stack
Helen Eason
Megan Eason

COPD. Asthma Lead. Spirometry. Minor Illness.
Travel Vaccinations

Health Care Assistants

Rebecca Roberts
Sarah Mead

3 THE PRACTICE TEAM

Practice Manager

Nigel Meadows MBA. BA (Hons). PGCE.

Office Manager

Sue Ellerton

IT & Systems

Sadrina Campbell

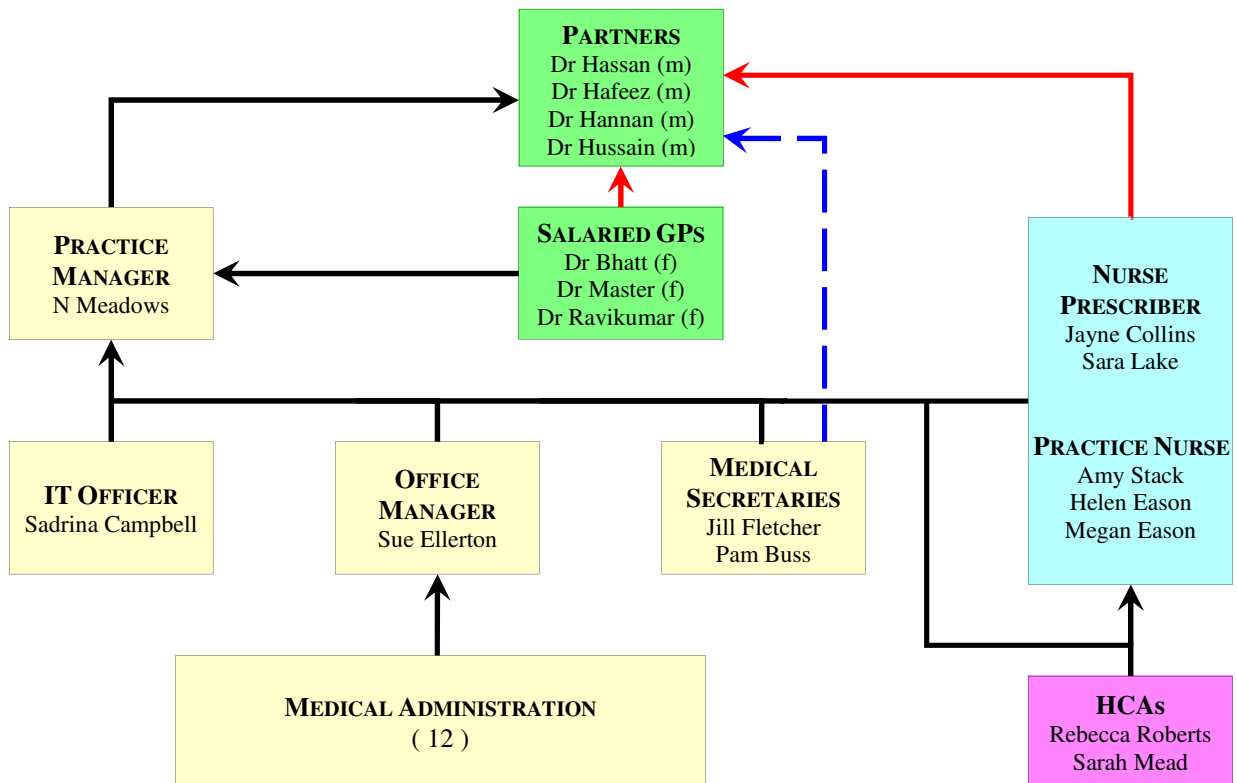
Medical Secretaries

Jill Fletcher
Pam Buss

Medical Administration

Jenna Blundell	Aneta Duca	Dawn Elsify
Linda Galaszka	Doreen Gills	Pat Gudging-Brown
Rachel Haggart	Bev Hale	Susan Murray
Hilary Meadows	Adriana Raducanu	

Organisation Chart



The Locality

Priory Gardens Surgery is based in Dunstable Health Centre in the very centre of Dunstable.

The town has excellent national transport links and easy access to London. There are numerous local tourist attractions, national heritage sites, with excellent shopping, cinema and theatre in nearby Central Milton Keynes. There is a good choice of local schools.

Premises

We are tenants based in a purpose-built Health Centre (1976). Our landlords are NHS Property Services. We make maximum use of the space available to us within the building. Other occupancy is by NHS Trust staff responsible for delivering their own range of services. We are involved in a locality development plan for new premises suitable for several practices and an intention for “one stop” health care provision. Accommodation comprises of six consulting rooms, two treatment rooms, three examination rooms, staff room, waiting room and reception area, patients toilet facilities including disabled toilets, and administrative areas. There is staff car parking on site.

The list size is currently just approximately 12,500 patients and grew by 20% in the last 12 months. We hold a GMS contract.

We use “SystemOne” paper light which is linked to Community Services and all the practices in our locality.

The practice is a member of Bedfordshire CCG and part of the Chiltern Vale locality. We take an active part in clinical commissioning.

Our Patient Participation Group meets once a month and we also have an extended virtual group.

5 SURGERY OPENING TIMES

Monday – Friday	08.00 - 18.30
Saturday half day	08.00 - 12.30
Sundays	Closed
Bank Holidays	Closed

6 APPOINTMENTS

Weekday Consultations

The surgery operates an appointment system for consultations.

Appointments may be booked by telephone, online or in person at the reception desk. Urgent medical problems and emergencies are always seen on the same day. Patients are free to see any of the doctors.

Sit and Wait Clinic

The surgery holds a daily Sit & Wait clinic where urgent patients can turn up and be seen without an appointment. See the surgery web site for details.

Standard Appointments

If a patient wishes to see a specific doctor, they will be offered the next available appointment with that doctor. We try to offer all patients appointments on the same day, and certainly within 48 hours. Some of the doctors are only part time and there are days when they do not work and this will affect the availability of appointments.

The busiest times at the surgery are Mondays and the day following a Bank Holiday.

Practice Nurses may be consulted for many problems. Some nurses have advanced training and are able to issue prescriptions. The receptionists can help decide if seeing a nurse is appropriate.

Home Visits

The Duty Doctor of the day is responsible for all home visits.

7 ASSOCIATED STAFF WHO ATTEND THE PRACTICE

- Health Visitors
- District Nurses
- Community Midwives
- Community Matron
- McMillan Nurse
- Psychiatric Liaison Nurse

8 PRACTICE SERVICES

Clinics:

- Stop Smoking Counselling
- Anti-Coagulation Clinics
- 24-Hour ECG / Event Monitoring
- 24-Hour Ambulatory Blood Pressure Monitoring
- Family Planning Service (including IUD, IUS, Implants)
- Spirometry
- Asthma
- Diabetes
- CVD – Cardiovascular Clinics
- Acute Services LES

Other Clinics:

- Midwife (Weekly, by Appointment)
- Well Baby Session