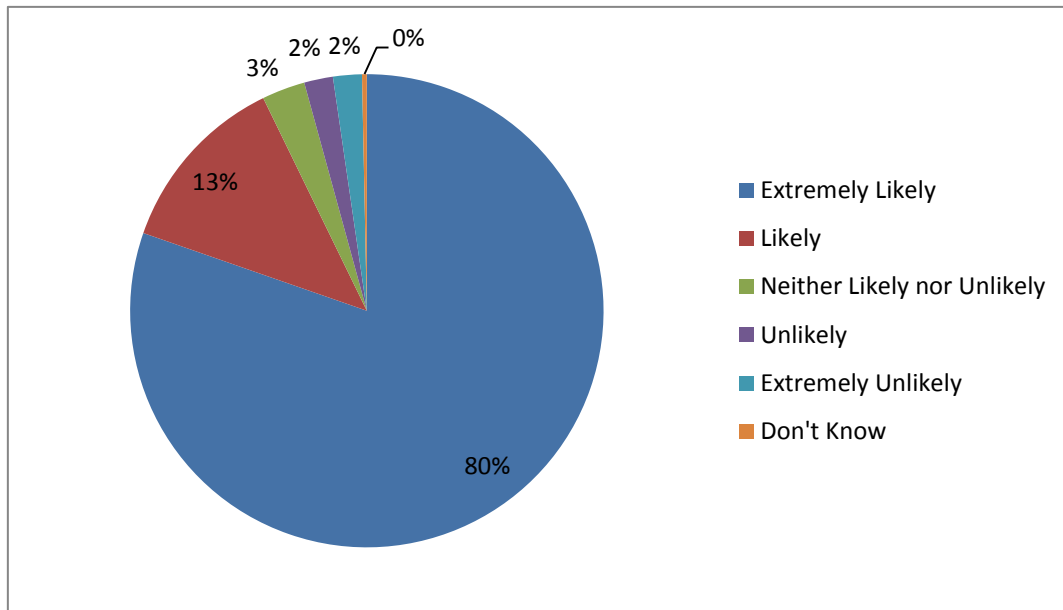


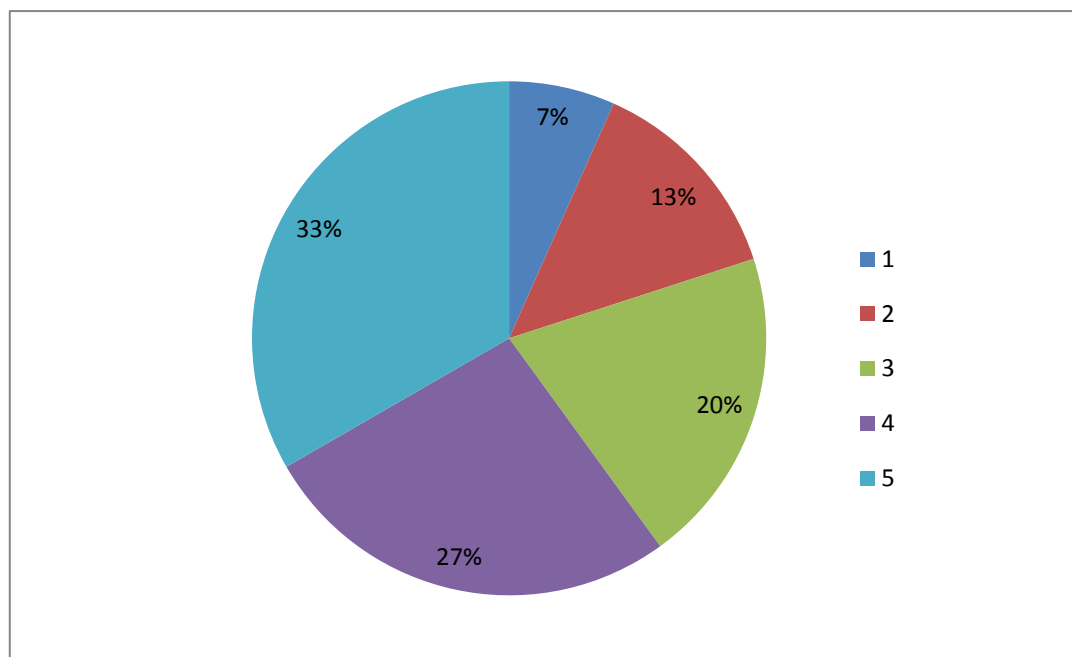
Friends and Family Test - Results to date

(Dec 14 - 02/02/16)

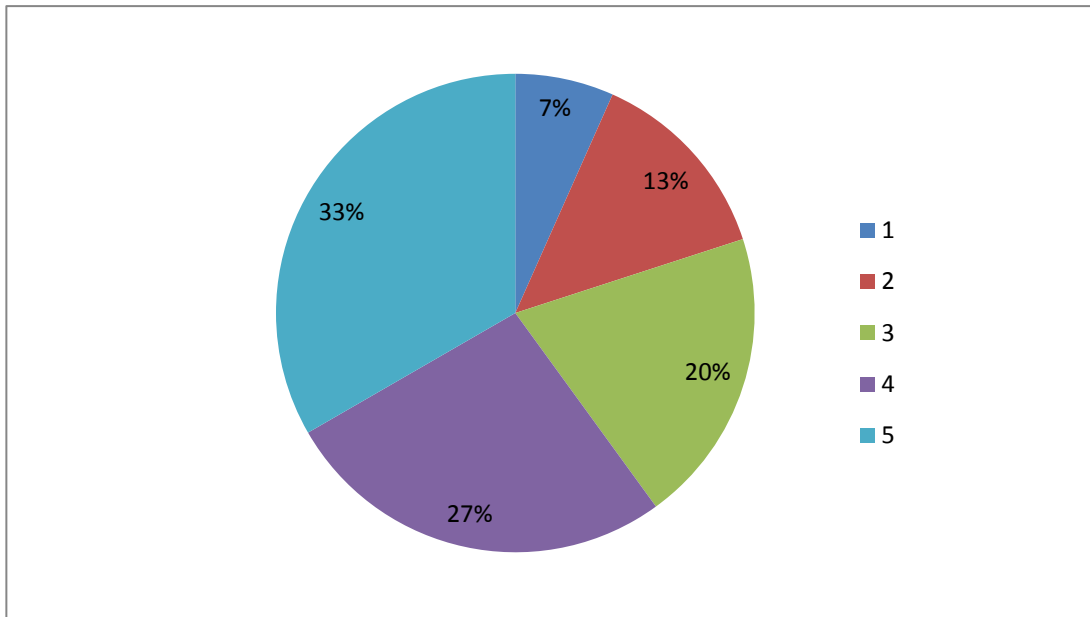
How likely are you to recommend our GP Surgery to friends and family if they needed similar care or treatment?



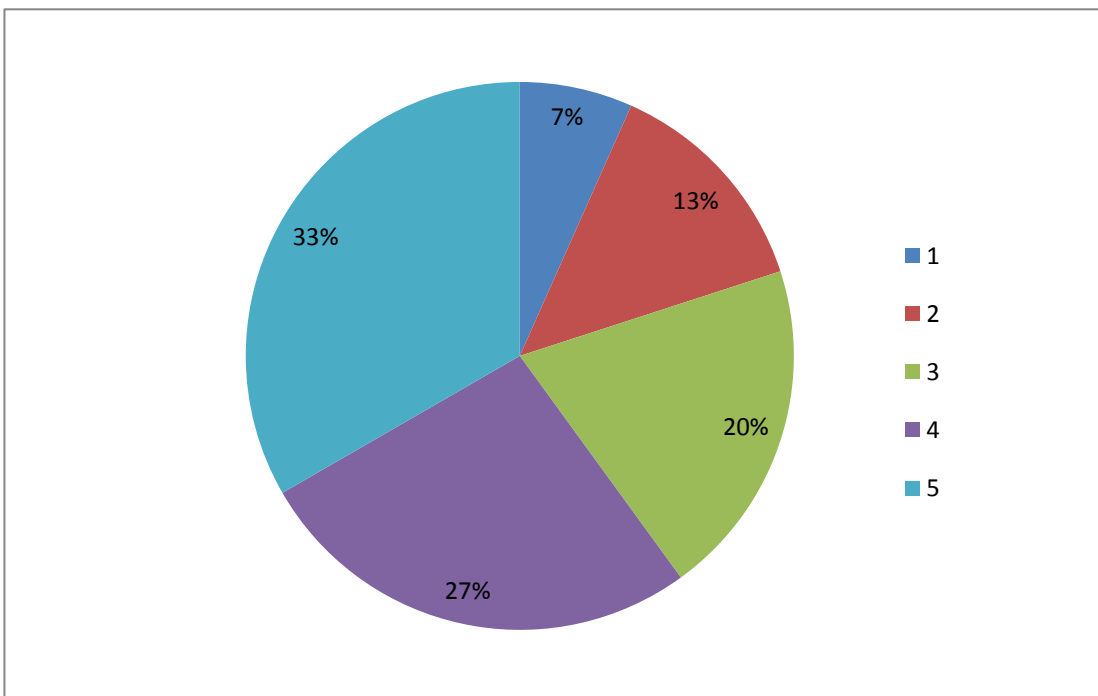
On a scale of 1 – 5 where 1 = 'Not at All' and 5 = 'Totally' please rate: Were you involved enough in decisions made about your care and treatment?



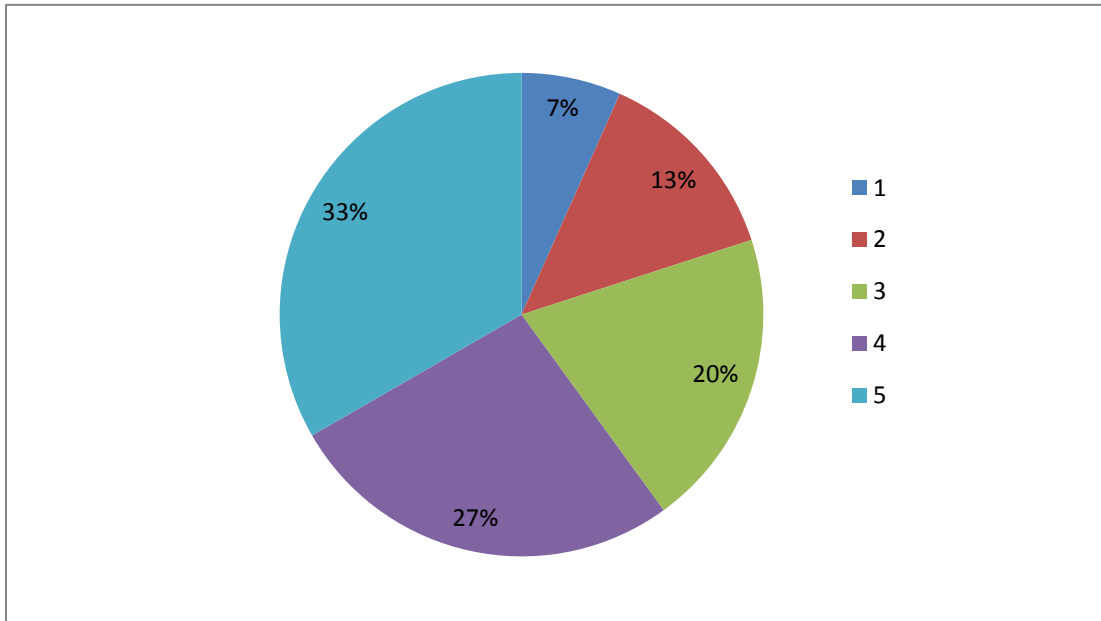
**On a scale of 1 – 5 where 1 = 'Not at All' and 5 = 'Totally' please rate:
Was the surgery clean?**



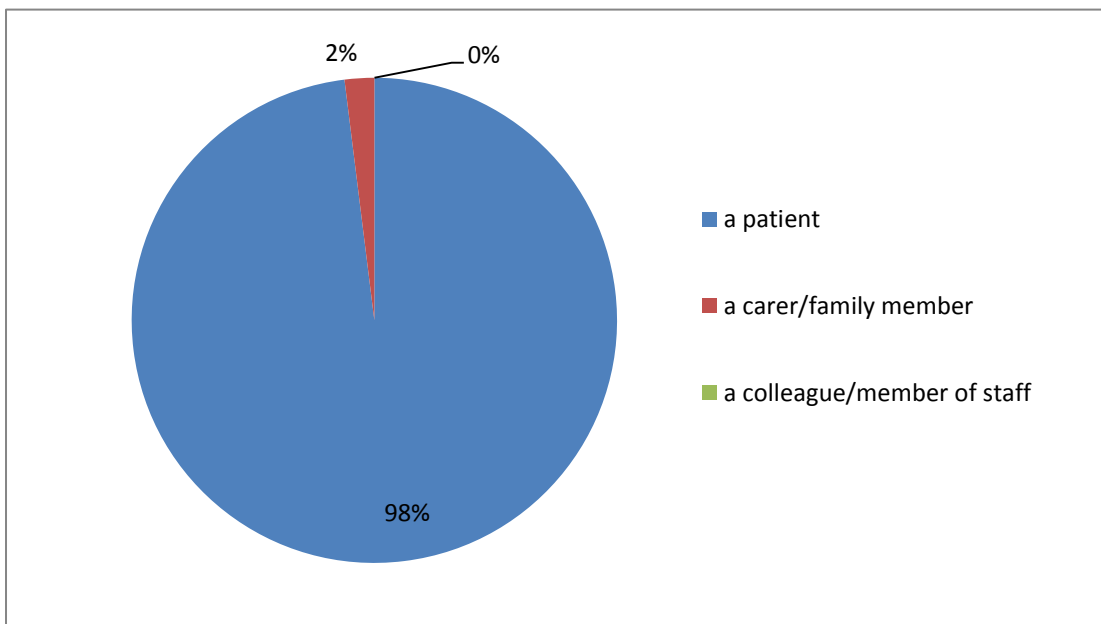
**On a scale of 1 – 5 where 1 = 'Not at All' and 5 = 'Totally' please rate:
Were the receptionists helpful?**



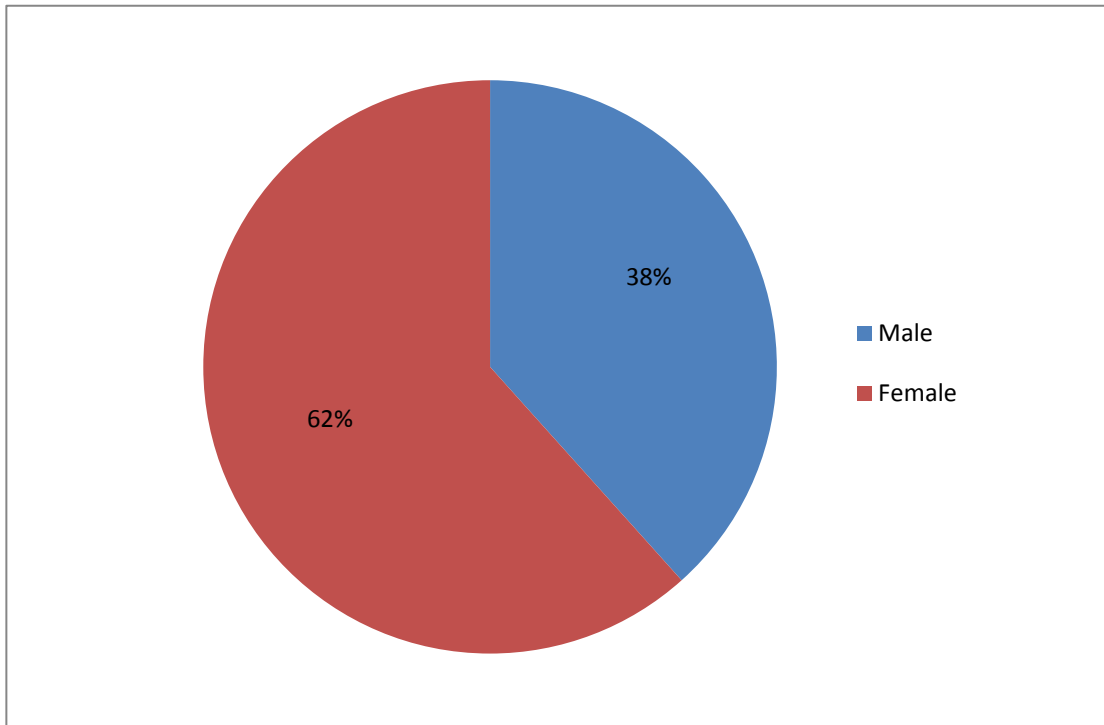
On a scale of 1 – 5 where 1 = 'Not at All' and 5 = 'Totally' please rate:
It is easy to get an appointment (either by phone, on-line or at the surgery) ?



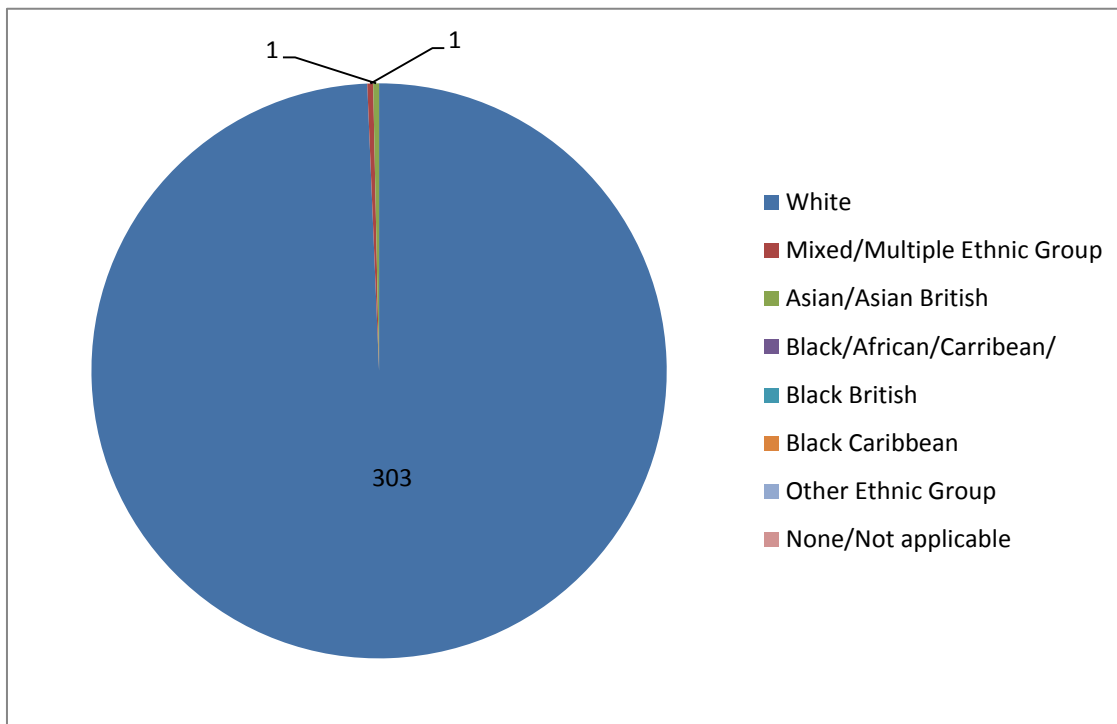
I AM



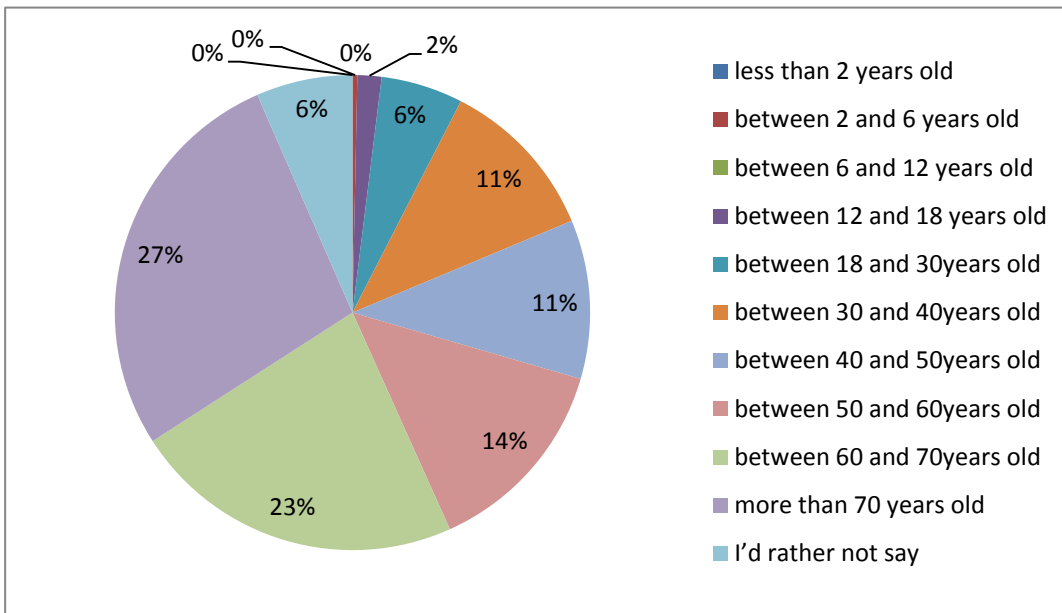
I AM



Your ethnicity



Your age



Do you have any of the following long standing conditions?

